



Feb 28, 2011

PA Department of Environmental Protection
c/o Tony Shaw
P.O. Box 2063
Harrisburg, PA 17105-2063

Dear Tony,

On behalf of our fellow co-petitioners, Delaware Riverkeeper Network is pleased to submit to the Department of Environmental Protection a stream redesignation petition for the Mill Creek, a small beautiful tributary of Union Township Berks County that feeds directly into the Schuylkill River. This stream is surrounded by many special designation streams and we believe it too is deserving of special protection and Exceptional Value status due to its diverse macroinvertebrate life and other qualifiers.

Co-petitioners for the Mill Creek redesignation include Berks County Conservation District, Township of Union Environmental Advisory Council, PA Department of Conservation and Natural Resources, and Berks Conservancy. In addition to these important partner organizations, 65 watershed residents have also joined in as co-petitioners to encourage protection of this tributary stream.

We look forward to working with the Dept. to make this redesignation petition a reality and we thank you for all that you do to protect the streams and habitats of the Commonwealth.

Thank you for your time and consideration.

Sincerely,

Faith Zerbe
Monitoring Director
Delaware Riverkeeper Network

Delaware Riverkeeper Network
300 Pond Street, Second Floor
Bristol, PA 19007
tel: (215) 369-1188
fax: (215) 369-1181
drkn@delawareriverkeeper.org
www.delawareriverkeeper.org

**COMMONWEALTH OF PENNSYLVANIA
ENVIRONMENTAL QUALITY BOARD**

PETITION FORM

I. PETITIONER INFORMATION

Name: Township of Union Environmental Advisory Council, Delaware Riverkeeper Network, Berks County Conservation District, Dept of Conservation and Natural Resources, and Berks Conservancy

Mailing Address: c/o Delaware Riverkeeper Network

300 Pond Street 2nd Floor

Bristol, PA 19007

Telephone Number: 215-369-1188 ext 110

Date: 2/28/11

II. PETITION INFORMATION

A. The petitioner requests the Environmental Quality Board to (check one of the following):

☐ Adopt a regulation

☒ Amend a regulation (Citation 25 pa code § 93.9f)

☐ Repeal a regulation (Citation _____)

Please attach suggested regulatory language if request is to adopt or amend a regulation.

B. Why is the petitioner requesting this action from the Board? (Describe problems encountered under current regulations and the changes being recommended to address the problems. State factual and legal contentions and include supporting documentation that establishes a clear justification for the requested action.)

Mill Creek is surrounded by other special protection tributaries and is part of the Schuylkill Highlands Region.

Its headwaters begin in the French Creek State Park and the watershed is approximately 73% forested. Based on benthic surveys conducted in 2009 by DRN and Berks County Conservation District staff, and Union Township EAC, DRN and its co-petitioners believe that this stream is not properly designated and worthy of special protection and EV designation.

This redesignation is important for the preservation of this watershed as Union Township grows over time.

For more information on justification see pp 5-7 in the petition.

- C. Describe the types of persons, businesses and organizations likely to be impacted by this proposal.

Union Township, on its website, prides itself with a tagline of "a Community Diverse in Natural Resources",
of which Mill Creek is part of this natural beauty. With French Creek State Park and the Schuylkill Highlands
being part of the Mill Creek, this region is enjoyed for the beauty and diversity it still is able to provide to
residents within the region, Birders and other wildlife enthusiasts, hikers, and visitors also enjoy the amenity
this watershed has to offer. Agriculture that remains in the Watershed will also benefit from the preservation of
Mill Creek. There are currently no point source discharges in this watershed.

- D. Does the action requested in the petition concern a matter currently in litigation? If yes, please explain.

No

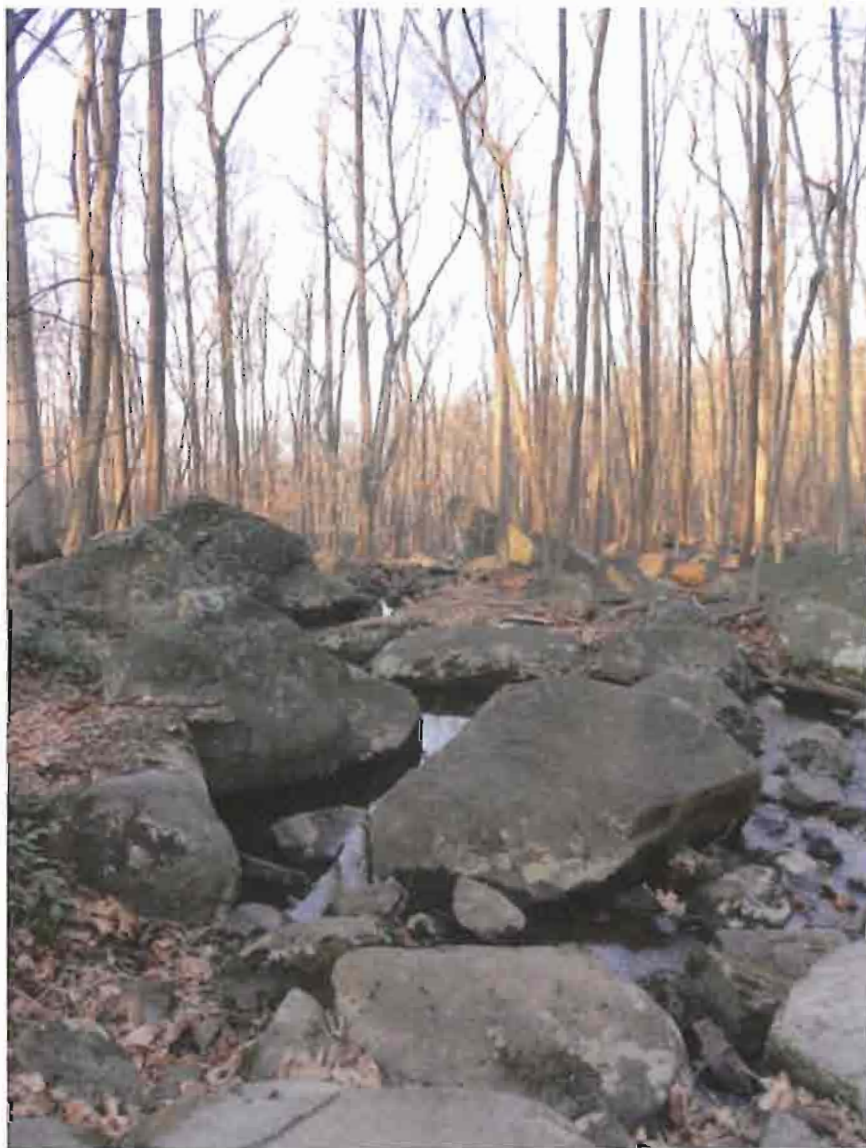
- E. For stream redesignation petitions, the following information must be included for the petition to be considered complete. Attach supporting material as necessary.

1. A clear delineation of the watershed or stream segment to be redesignated, both in narrative form and on a map.
2. The current designated use(s) of the watershed or segment.
3. The requested designated use(s) of the watershed or segment.
4. Available technical data on instream conditions for the following: water chemistry, the aquatic community (benthic macroinvertebrates and/or fishes), or instream habitat. If such data are not included, provide a description of the data sources investigated.
5. A description of existing and proposed point and nonpoint source discharges and their impact on water quality and/or the aquatic community. The names, locations, and permit numbers of point source discharges and a description of the types and locations of nonpoint source discharges should be listed.
6. Information regarding any of the qualifiers for designation as high quality waters (HQ) or exceptional value waters (EV) in §93.4b (relating to qualifying as High Quality or Exceptional Value waters) used as a basis for the requested designation.
7. A general description of land use and development patterns in the watershed. Examples include the amount or percentage of public lands (including ownership) and the amount or percentage of various land use types (such as residential, commercial, industrial, agricultural and the like).
8. The names of all municipalities through which the watershed or segment flows, including an official contact name and address.
9. Locational information relevant to items 4-8 (except for contact names and addresses) displayed on a map or maps, if possible.

All petitions should be submitted to the
Secretary of the Department of Environmental Protection
P.O. Box 2063
Harrisburg, PA 17105-2063



**Petition to Upgrade the Mill Creek Watershed
Union Township, Berks County**



February 28, 2011

**Submitted by Delaware Riverkeeper Network
in partnership with Township of Union Environmental Advisory Council,
Berks County Conservation District, Pennsylvania Department of Conservation and
Natural Resources, and Berks Conservancy**



Petition to PA DEP for a Stream Redesignation of Mill Creek, Berks County **Submitted February 28, 2011**

1. Delineation of the Watershed

The Mill Creek watershed is located almost fully within Union Township, Berks County, PA. A tributary to the south reaches into Chester County (North Coventry Township) and into the French Creek State Park. Mill Creek is a direct tributary to the Schuylkill River. The headwaters begin within the boundaries of French Creek State Park and the watershed is approximately 73% forest canopy.

2. Current Designated Use of the Watershed

WWF

3. Requested Designated Use of the Watershed

EV

4. Available Technical Data of Instream Conditions

At the request of Union Township Environmental Advisory Council (EAC), Delaware Riverkeeper Network biologists and Berks County Conservation District staff (BCCD) conducted sampling of Mill Creek on May 21, 2009 with a stream-side macroinvertebrate assessment for the Mill Creek Watershed at four stations and limited water chemistry snapshots at five stations (See Table 1 and Map 1). DRN and BCCD staff used PA DEP's ICE Protocol and Semi-Quantitative (PaDEP-RBP) Method to collect macroinvertebrates for Mill Creek.

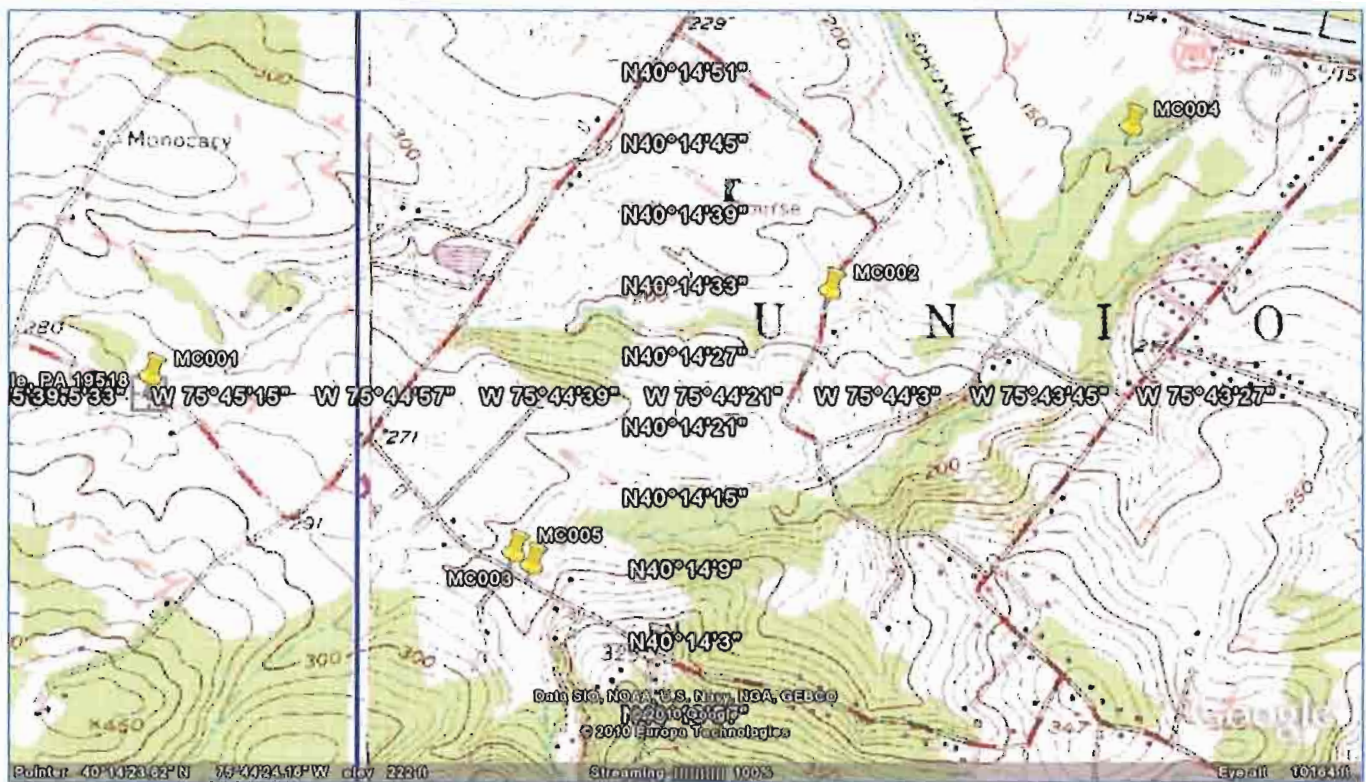
For this method, benthic macroinvertebrate samples were collected with a handheld D-frame net employing the semi-quantitative "kick" method used by PA DEP in shallow, fast and slow riffle areas. Sample collection consisted of 6 D-frame sample efforts from each station, composited into one sample. For this preliminary analysis to help indicate conditions for a potential stream redesignation petition and screening purposes, macroinvertebrates were counted and identified streamside, mostly to Order, and then returned to the stream unharmed.

Lamotte kits were used to test for nitrate-nitrogen and pH levels at five stations. Samples were collected using Whirl-pack bags and held on ice until analyzed within 12 hours of sampling.

Table 1. Mill Creek Sample Stations, Union Township, Berks County

Sample Site Code	Site Description	Lat. Long. (from Google Earth)
MC001	Red Corner Road (Upstream of Blackwood Golfcourse)	40°14'23.79"N 75°45'23.33"W
MC002	Hallman Road (DS of Blackwood Golfcourse)	40°14'31.12"N 75°44'8.77"W
MC003	Sycamore Road (south south branch)	40°14'7.81"N 75°44'41.62"W
MC004	Main Stem, off pipeline ROW (1/4 mile from Hillside Dr.)	40°14'45.07"N 75°43'35.29"W
MC005	Sycamore Road (south branch)	40°14'8.86"N 75°44'43.59"W

Map 1. Mill Creek DRN Sample Stations



Individual insect counts, metrics and summary graphs are attached electronically in Excel format in the Appendix. Below a summary table indicating the macroinvertebrate community found during sampling conducted on May 21, 2009 by DRN and the Berks County Coservation District.

Table 2. Summary Macroinvertebrate Data for Mill Creek on 5/21/09

Station ID	MC001	MC002	MC003	MC004
Total Number of EPT Individuals	315	149	199	220
% Common Netspinners	6.8119891	1.4851485	11.24031	8.8607595
% Lunged Snails	0.2724796	0.4950495	0.3875969	0.3164557
Total Number of Beetles	12	20	26	50
% Beetles	3.2697548	9.9009901	10.077519	15.822785
Total Number of Tolerant	36	22	27	34
% Tolerant	9.8092643	10.891089	10.465116	10.759494
Total Number of Non-Insects	8	7	13	8
% Non-Insects	2.1798365	3.4653465	5.0387597	2.5316456
Total Number of True Flies (Diptera)	29	17	20	12
% True Flies (Diptera)**	7.9019074	8.4158416	7.751938	3.7974684
EPT/Diptera Ratio***	10.862069	8.7647059	9.95	18.333333
Total Caddisflies (Trichoptera)	151	28	55	98
% Hydropsychidae to Trichoptera	16.556291	10.714286	52.727273	28.571429
% Plecoptera	17.438692	10.39604	17.054264	6.9620253
% Chironomidae	1.3623978	2.970297	3.1007752	2.2151899

** If the value is greater than 40%, then conditions are poor. If the value is between 20 and 40%, then conditions are moderate. If the value is less than 20%, then conditions are good.

*** The higher the number, the healthier the stream

Table 3. Water Chemistry Data for Mill Creek, 5/21/2009

Station ID	MC001	MC002	MC003	MC004	MC005
pH	7.0	7.0	7.0	7.0	7.0
Nitrate-nitrogen (mg/l)	2.0	1.0	<1.0	<1.0	<1.0

Delaware Riverkeeper Network also conducted water quality sampling within French Creek State Park on January 4, 2011 off of the Mill Creek Trail. As suspected, the quality of the water was of exceptional quality with low TDS and low nitrogen levels.

Gary Walters, biologist with PADEP also conducted a benthic study of the Mill Creek near its mouth with the Schuylkill River in August 28, 1998. Conditions were very good. PADEP data is located in the Appendix.

5. Existing and Proposed Point Source and Non-Point Source Dischargers

DRN used PA DEP's "What's In My Watershed" GIS interactive map to search for Water Pollution Control Facilities in the Mill Creek Watershed region. We then cross-referenced the facilities with a Google Earth address search using USGS topographic maps to narrow down the search to facilities within the Watershed. As a result, two potential impacts may be important to note within the Mill Creek Watershed from this research, but it appears there are no NPDES discharges permitted in the watershed. BCCD confirmed that to their knowledge, there were no point-source discharges in the Mill Creek drainage area.

SITE_ID	SITE_NAME	SISSCD_ID	EPA_SITE_ID	ADDRESS1	ADDRESS2	CITY	STATE_CODE	ZIP_CODE
455550	EVERGREEN MINIATURE GOLF	2	PA3061068	77 HALLMAN RD		DOUGLASSVILLE	PA	19518
452579	BLACKWOOD GC	2	PA3060533	510 RED CORNER RD	PO BOX 416	DOUGLASSVILLE	PA	19518-9768

Nonpoint source pollution is often carried as stormwater runoff from the following sources:

- roads and parking lots (i.e. hydrocarbons, heavy metals, sediment, road salt);
- lawns (fertilizers, pesticides, dog waste);
- cultivated fields (soil erosion/sedimentation)
- construction sites (soil erosion/sedimentation)
- livestock pastures (manure, soil erosion/sedimentation)
- stormwater management facilities
- on-lot septic systems

Blackwood Golfcourse is within Mill Creek's boundaries where manicured turf is maintained and mowed up to the edge of the stream. A grab sample taken at MC002 in May, 2009 indicated nutrient levels at 1.0 mg/l and there are likely effects on the stream from this landuse. The Mill Creek is 73% forested which helps explain diversity and current water quality of this watershed.



May 21, 2009, Blackwood Golfcourse, facing US from Hallman Road

6. Information regarding any of the qualifiers for designation as high quality or exceptional value waters used as a basis for the requested designation.

The petitioners believe that the following criteria are fulfilled for the Mill Creek Watershed to warrant the redesignation from a WWF to an EV watershed.

7.3(f)(i)(B): Biological assessment qualifier.

The stream data above and attached for Mill Creek illustrates the diversity and health of the Mill Creek that is populated with a good variety of pollution sensitive macroinvertebrates.

PADEP data from August, 1988 also indicate high quality. See Appendix.

7.3(f)(ii)(C): Outstanding national, state, regional or local resource water and

7.3(f)(ii)(D): Surface water of exceptional recreational significance.

The Mill Creek's headwaters are located within the eastern half of French Creek State Park. The state park and all of the Mill Creek Watershed is within the Schuylkill Highlands. The 7,730-acre French Creek State Park and part of the Mill Creek Watershed makes up part of the largest block of contiguous forest remaining here in the northeast between Washington D.C. and New York City (73,000 acres). And the Schuylkill Highlands notes this as one of the few remaining Interior Forest habitats in the region (See Schuylkill Highlands Map of Interior Forest in Appendix).

There are currently only 22 "natural areas" within the Commonwealth designated within DCNR state parks (as indicated by web search on 1.20.2011). But French Creek State Park has a designated "Mill Creek Critical Conservation Resource Area" due to the presence of unique flora in the watershed (Natural Resources Inventory and Management Recommendations for French Creek State Park, July 2008. Timothy Block and Ann Rhoads, Morris Arboretum, University of Pennsylvania). The diversity of the Conservation Resource Area for Mill Creek is high and includes three PNHP-listed species: a population of about 300 plants of nodding trillium, several hundred southern adder's-tongue ferns (watch list), and a small colony of crane fly orchid (PR). The Conservation Resource Area encompasses 511 acres and encompasses the valley of Mill Creek and several small tributary streams and their adjacent slopes (see Appendix). The plan's recommendations include: protect the hydrology of the valley by maintaining forest cover on adjacent slopes and uplands and manage the existing trail crossings of Mill Creek to reduce erosion and resulting degradation of water quality.

The area of Mill Creek and the French Creek State Park is an Important Bird Area and Important Mammal Area as designated by the National Audubon Society and nearby Mill Creek within the state park, is Pine Swamp, a State Park Natural Area that encompasses 98 acres of acidic broadleaf swamp (See Schuylkill Highlands Map in Appendix).

Resource Management Plan for French Creek State Park

French Creek State Park has a resource management plan that includes water quality protective measures for the streams that flow through the park and DCNR has designated a "Mill Creek Low Density Area Management Unit" within their plan. This area includes 2,527 acres of forested terrain that is almost completely undeveloped. The trails along Mill Creek within the park provide a unique experience for hikers since this area is pristine in many ways and has diverse plant life and beautiful springs and water features. A vernal pond is found along the Mill Creek Trail near the top of Chestnut Hill. This management unit has been put in place to protect the sensitive

habitat of the Mill Creek watershed within the park. Goals are listed: 1) to preserve the undeveloped wild nature of the unit; 2) to preserve and protect the natural resources in the unit from damage and or destruction by fires, insects, diseases, wildlife, and outside influences; 3) to provide for quality recreation, environmental study, and other healthful outdoor activities; and 4) to preserve and interpret the cultural resources found within the units.

The Nature Conservancy has also recommended the protection of Mill Creek from the point where it leaves French Creek State Park to its confluence with the Schuylkill River.

Protective Local Ordinances

In 1997, Union Township Board of Supervisors adopted Ordinance No 97-6 to restrict building in the floodplain (Chapter 106, <http://www.ecode360.com/?custId=UN1916>) for waters located in the Township.

Union Township also upholds the Berks County Stormwater Management guidelines in township ordinances to protect tributaries that drain to the Schuylkill River. For example, applicants proposing regulated activities in tributaries to the Schuylkill River in Berks County...shall submit a drainage plan consistent with the Tributaries to the Schuylkill River in Berks County Stormwater Management Plan to Union Township for review. These criteria shall apply to the total proposed development even if development is to take place in stages.

(<http://www.ecode360.com/?custId=UN1916>) [HISTORY: Adopted by the Board of Supervisors of the Township of Union 7-21-2008 by Ord. No. 2008-3. Editor's Note: This ordinance also repealed former Ch. 165, Stormwater Management, adopted 7-19-2004 by Ord. No. 2004-13.)

Mill Creek is within the Schuylkill Highlands

The Highlands region was designated by an Act of Congress, *The Highlands Conservation Act*, and declares the area to be nationally significant. The Schuylkill River is within a National and State Heritage Area and as such, the preservation, interpretation and celebration of the river's industrial heritage can support new economic growth in cultural, eco and heritage tourism. 8.5% of the 926,689 total acreage of the Schuylkill Highlands is protected. One of the four major goals of the highlands is to conserve at least 50% of the region's most critical habitat and watershed headwaters and provide stewardship of the key natural resources.

The Schuylkill Highlands Partnership integrates the inspiration and action of many local, county and state government partners, land trusts, and nonprofit organizations. The partnership devotes its attention and expertise to protecting and preserving this critical landscape in a manner that will enable its vibrant sustainable economic future. The partners have a deep commitment to working together in certain places of unsurpassed natural resource value (http://www.dcnr.state.pa.us/ucmprd1/groups/public/documents/document/d_001827.pdf).

The Schuylkill Highlands mini-grant initiative helped fund the development of this stream upgrade petition as the coalition sees this protection of the Mill Creek as a critical link to preserving this unique and beautiful Highlands Region.

Preserved Lands

The headwaters of the Mill Creek are within the boundaries of French Creek State Park (see French Creek State Park May in Appendix). Union Township highlights its municipality as a "Community Diverse in Natural Resources".

Unique recreational opportunities

With the headwaters of Mill Creek flowing through protected French Creek State Park and with the Mill Creek Trail crossing over the stream at two locations as well as several other small tributary streams that feed Mill Creek in the Park, this access provides park users with first-hand experience to forested headwater streams that are pristine in many ways.



Stream crossings along the Mill Creek Trail within French Creek State Park. Photos taken January 1, 2011

7. General description of land use and development patterns in the watershed.

Mill Creek remains approximately 73% forested. With the headwaters beginning in French Creek State Park, it should remain forested for long term. Residential homes dot the watershed and some agriculture is also evident in the watershed. In the past several years, residential development has begun to increase according to Berks County Conservation District. The Appendix includes maps from various sources. Schuylkill Highlands maps are also accessible at <http://schuylkillhighlands.org/Maps>.

8. The names of all municipalities through which the watershed or segment flows, including an official contact name and address.

Union Township – Berks County
1445 E. Main Street
Douglassville PA 19518
Phone: 610-582-3769, 610-385-3769
Fax: 610-582-4737
E-mail: unionberks@dejazzd.com
Contact: Carol R. Lewis

North Coventry Township – Chester County
845 South Hanover Street
Pottstown, PA 19465
Phone: 610-323-1694
Fax: 610-323-7239
E-mail: khennessy@northcoventry.us
Contact: Kevin Hennessey

9. Locational information relevant to items 4-8 displayed on a map or maps, if possible. Please See Appendix

Appendix

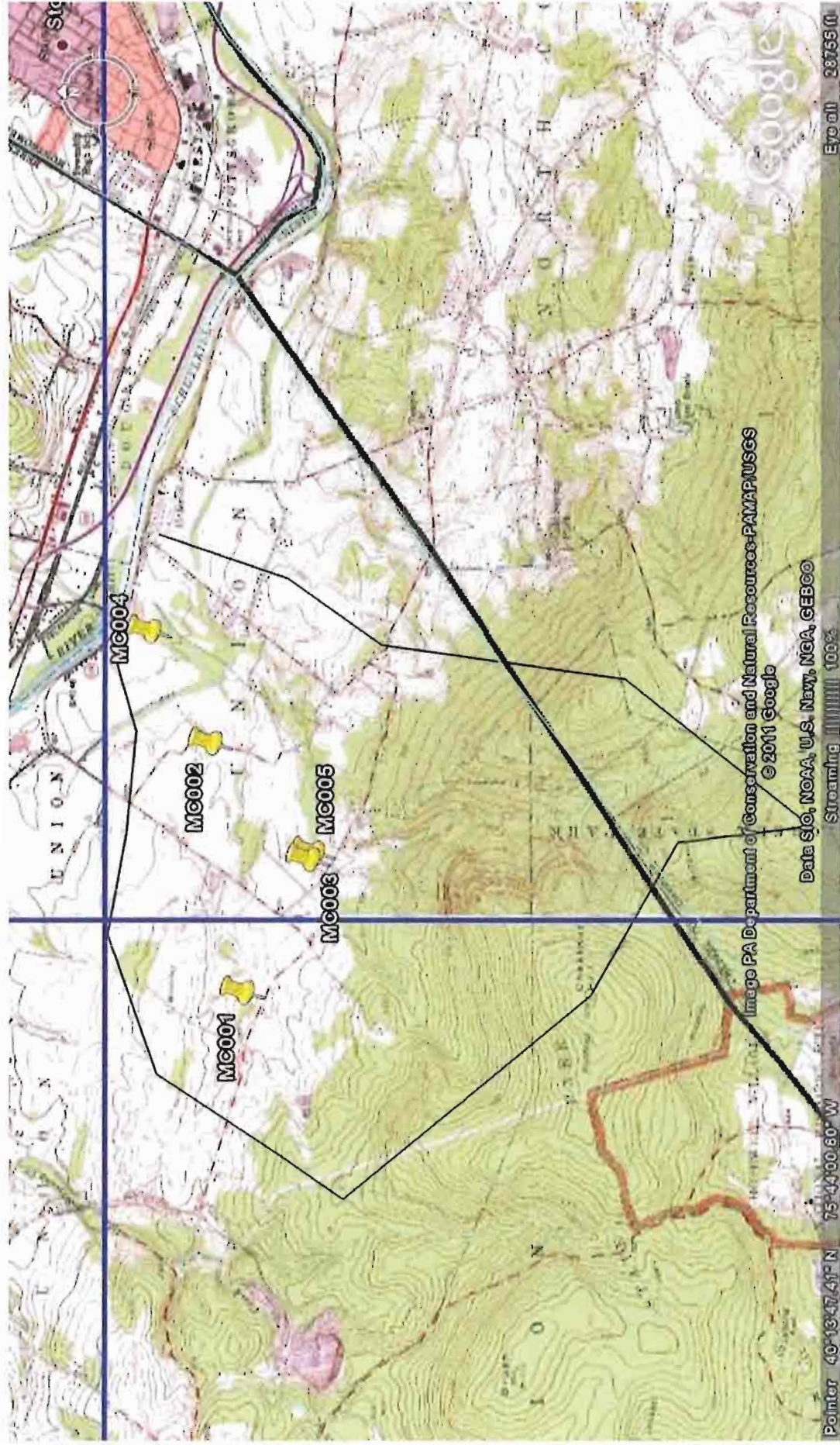
**General Vicinity Google Topo Map of Watershed
General Vicinity Google Aerial Map of Watershed
French Creek State Park Map
Schuylkill Highlands Interior Forest Map
Schuylkill Highlands Conservation Landscape Initiative Map
Schuylkill Highlands Important Bird and Mammal Areas
Schuylkill Highlands Stream Map**

**DRN Macroinvertebrate Data and Tables, May 21, 2009
PADEP Macroinvertebrate Data
PADEP Habitat Assessment Form**

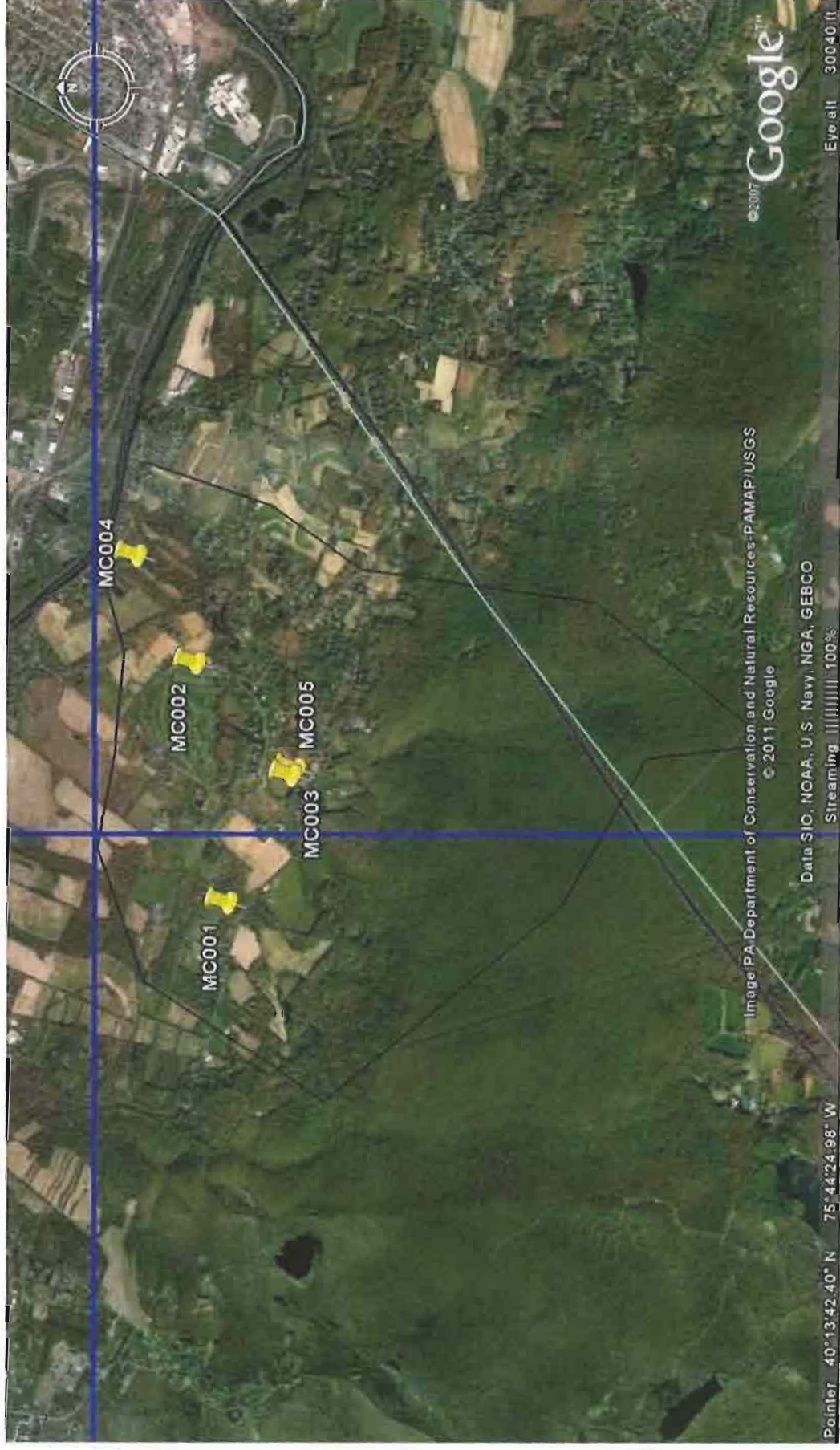
**Excerpt from Natural Resources Inventory for French Creek State Park
Mill Creek Low Density Area Management Unit
Photos of Mill Creek**

**Co-petitioner support letters
Township of Union Environmental Advisory Council
Pennsylvania Dept of Conservation and Natural Resources
Berks County Conservation District
Berks Conservancy
65 Citizen support letters**

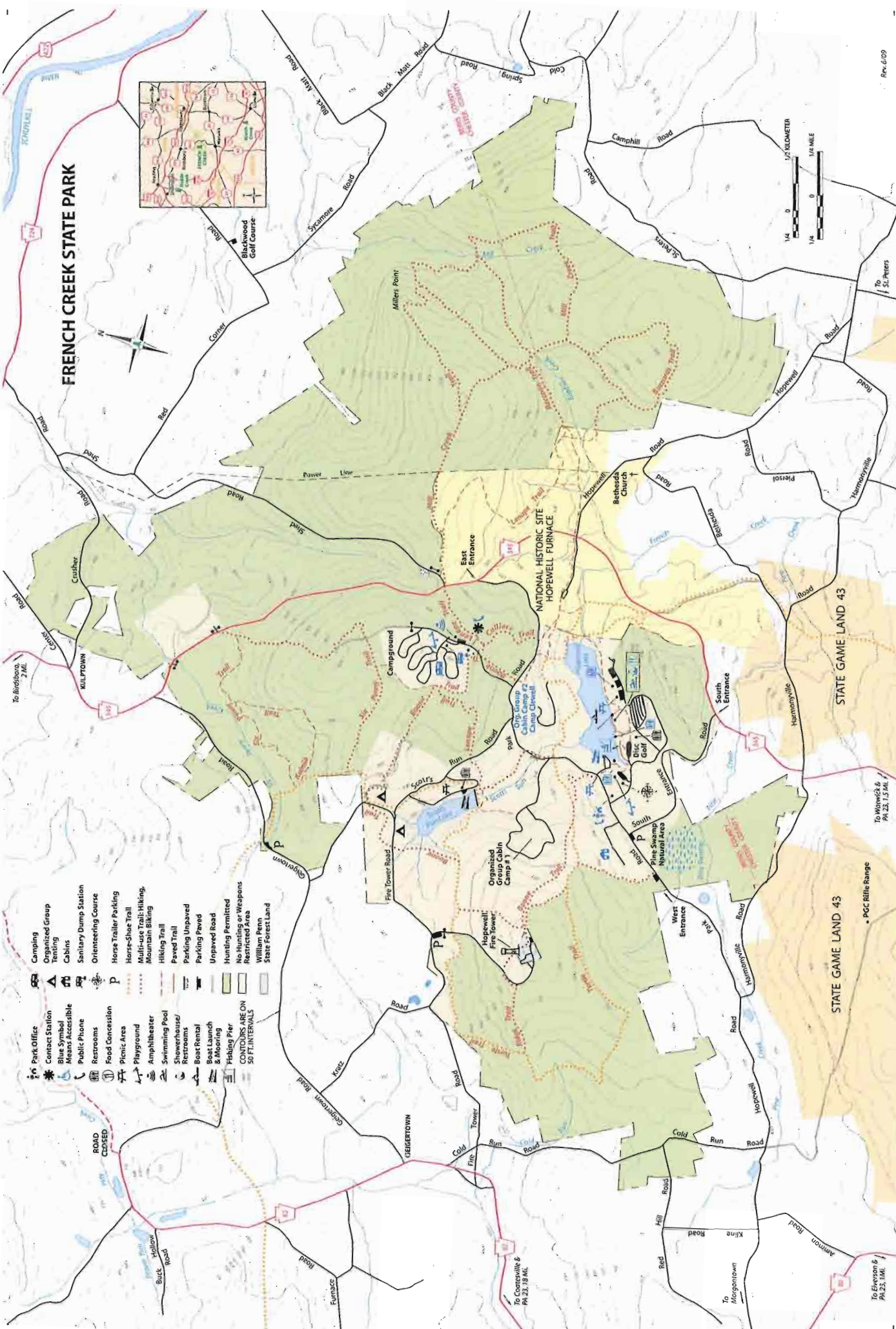
Approximate Delineation of Mill Creek Watershed, Berks County, Union Township



Aerial Map Showing General Landuses of Mill Creek Watershed



FRENCH CREEK STATE PARK



- Park Office
- Contact Station
- Blue Symbol
- Means Accessible
- Public Phone
- Restrooms
- Food Concession
- Picnic Area
- Playground
- Amphitheater
- Swimming Pool
- Showerhouse/Restrooms
- Boat Rental
- Boat Launch & Mooring
- Fishing Pier
- Camping
- Organized Group Tenting
- Cabins
- Sanitary Dump Station
- Orienting Course
- Horse Trailer Parking
- Horse-Shoe Trail
- Multi-Use Trail: Hiking, Mountain Biking
- Hiking Trail
- Paved Trail
- Parking Unpaved
- Parking Paved
- Unpaved Road
- Hunting Permitted
- No Hunting or Weapons
- Restricted Area
- William Penn
- State Forest Land

CONTOURS ARE ON 50 FT. INTERVALS



ROAD CLOSED

POC Rifle Range

STATE GAME LAND 43

STATE GAME LAND 43

NATIONAL HISTORIC SITE
HOPEWELL FURNACE

Hopewell
Fire Tower

Organized
Group Cabin
Camp # 1

Campground

Scout's
Run

Fire Tower Road

Georgetown Road

Kline Road

Cold Run Road

Fire Tower Road

Georgetown Road

Black Mt. Road

Sycamore Road

Conner Road

Reed Road

Cusher Road

Georgetown Road

Georgetown Road

Georgetown Road

Georgetown Road

Georgetown Road

Georgetown Road

Georgetown Road

Georgetown Road

Black Mt. Road

Sycamore Road

Conner Road

Reed Road

Cusher Road

Georgetown Road

Georgetown Road

Georgetown Road

Georgetown Road

Georgetown Road

Georgetown Road

Georgetown Road

Georgetown Road

Black Mt. Road

Sycamore Road

Conner Road

Reed Road

Cusher Road

Georgetown Road

Georgetown Road

Georgetown Road

Georgetown Road

Georgetown Road

Georgetown Road

Georgetown Road

Georgetown Road

Black Mt. Road

Sycamore Road

Conner Road

Reed Road

Cusher Road

Georgetown Road

Georgetown Road

Georgetown Road

Georgetown Road

Georgetown Road

Georgetown Road

Georgetown Road

Georgetown Road

Black Mt. Road

Sycamore Road

Conner Road

Reed Road

Cusher Road

Georgetown Road

Georgetown Road

Georgetown Road

Georgetown Road

Georgetown Road

Georgetown Road

Georgetown Road

Georgetown Road

Black Mt. Road

Sycamore Road

Conner Road

Reed Road

Cusher Road

Georgetown Road

Georgetown Road

Georgetown Road

Georgetown Road

Georgetown Road

Georgetown Road

Georgetown Road

Georgetown Road

Black Mt. Road

Sycamore Road

Conner Road

Reed Road

Cusher Road

Georgetown Road

Georgetown Road

Georgetown Road

Georgetown Road

Georgetown Road

Georgetown Road

Georgetown Road

Georgetown Road

Black Mt. Road

Sycamore Road

Conner Road

Reed Road

Cusher Road

Georgetown Road

Georgetown Road

Georgetown Road

Georgetown Road

Georgetown Road

Georgetown Road

Georgetown Road

Georgetown Road

Black Mt. Road

Sycamore Road

Conner Road

Reed Road

Cusher Road

Georgetown Road

Georgetown Road

Georgetown Road

Georgetown Road

Georgetown Road

Georgetown Road

Georgetown Road

Georgetown Road

Black Mt. Road

Sycamore Road

Conner Road

Reed Road

Cusher Road

Georgetown Road

Georgetown Road

Georgetown Road

Georgetown Road

Georgetown Road

Georgetown Road

Georgetown Road

Georgetown Road

Black Mt. Road

Sycamore Road

Conner Road

Reed Road

Cusher Road

Georgetown Road

Georgetown Road

Georgetown Road

Georgetown Road

Georgetown Road

Georgetown Road

Georgetown Road

Georgetown Road

Black Mt. Road

Sycamore Road

Conner Road

Reed Road

Cusher Road

Georgetown Road

Georgetown Road

Georgetown Road

Georgetown Road

Georgetown Road

Georgetown Road

Georgetown Road

Georgetown Road

Black Mt. Road

Sycamore Road

Conner Road

Reed Road

Cusher Road

Georgetown Road

Georgetown Road

Georgetown Road

Georgetown Road

Georgetown Road

Georgetown Road

Georgetown Road

Georgetown Road

Black Mt. Road

Sycamore Road

Conner Road

Reed Road

Cusher Road

Georgetown Road

Georgetown Road

Georgetown Road

Georgetown Road

Georgetown Road

Georgetown Road

Georgetown Road

Georgetown Road

Black Mt. Road

Sycamore Road

Conner Road

Reed Road

Cusher Road

Georgetown Road

Georgetown Road

Georgetown Road

Georgetown Road

Georgetown Road

Georgetown Road

Georgetown Road

Georgetown Road

Black Mt. Road

Sycamore Road

Conner Road

Reed Road

Cusher Road

Georgetown Road

Georgetown Road

Georgetown Road

Georgetown Road

Georgetown Road

Georgetown Road

Georgetown Road

Georgetown Road

Black Mt. Road

Sycamore Road

Conner Road

Reed Road

Cusher Road

Georgetown Road

Georgetown Road

Georgetown Road

Georgetown Road

Georgetown Road

Georgetown Road

Georgetown Road

Georgetown Road

Black Mt. Road

Sycamore Road

Conner Road

Reed Road

Cusher Road

Georgetown Road

Georgetown Road

Georgetown Road

Georgetown Road

Georgetown Road

Georgetown Road

Georgetown Road

Georgetown Road

Black Mt. Road

Sycamore Road

Conner Road

Reed Road

Cusher Road

Georgetown Road

Georgetown Road

Georgetown Road

Georgetown Road

Georgetown Road

Georgetown Road

Georgetown Road

Georgetown Road

Black Mt. Road

Sycamore Road

Conner Road

Reed Road

Cusher Road

Georgetown Road

Georgetown Road

Georgetown Road

Georgetown Road

Georgetown Road

Georgetown Road

Georgetown Road

Georgetown Road

Black Mt. Road

Sycamore Road

Conner Road

Reed Road

Cusher Road

Georgetown Road

Georgetown Road

Georgetown Road

Georgetown Road

Georgetown Road

Georgetown Road

Georgetown Road

Georgetown Road

Black Mt. Road

Sycamore Road

Conner Road

Reed Road

Cusher Road

Georgetown Road

Georgetown Road

Georgetown Road

Georgetown Road

Georgetown Road

Georgetown Road

Georgetown Road

Georgetown Road

Black Mt. Road

Sycamore Road

Conner Road

Reed Road

Cusher Road

Georgetown Road

Georgetown Road

Georgetown Road

Georgetown Road

Georgetown Road

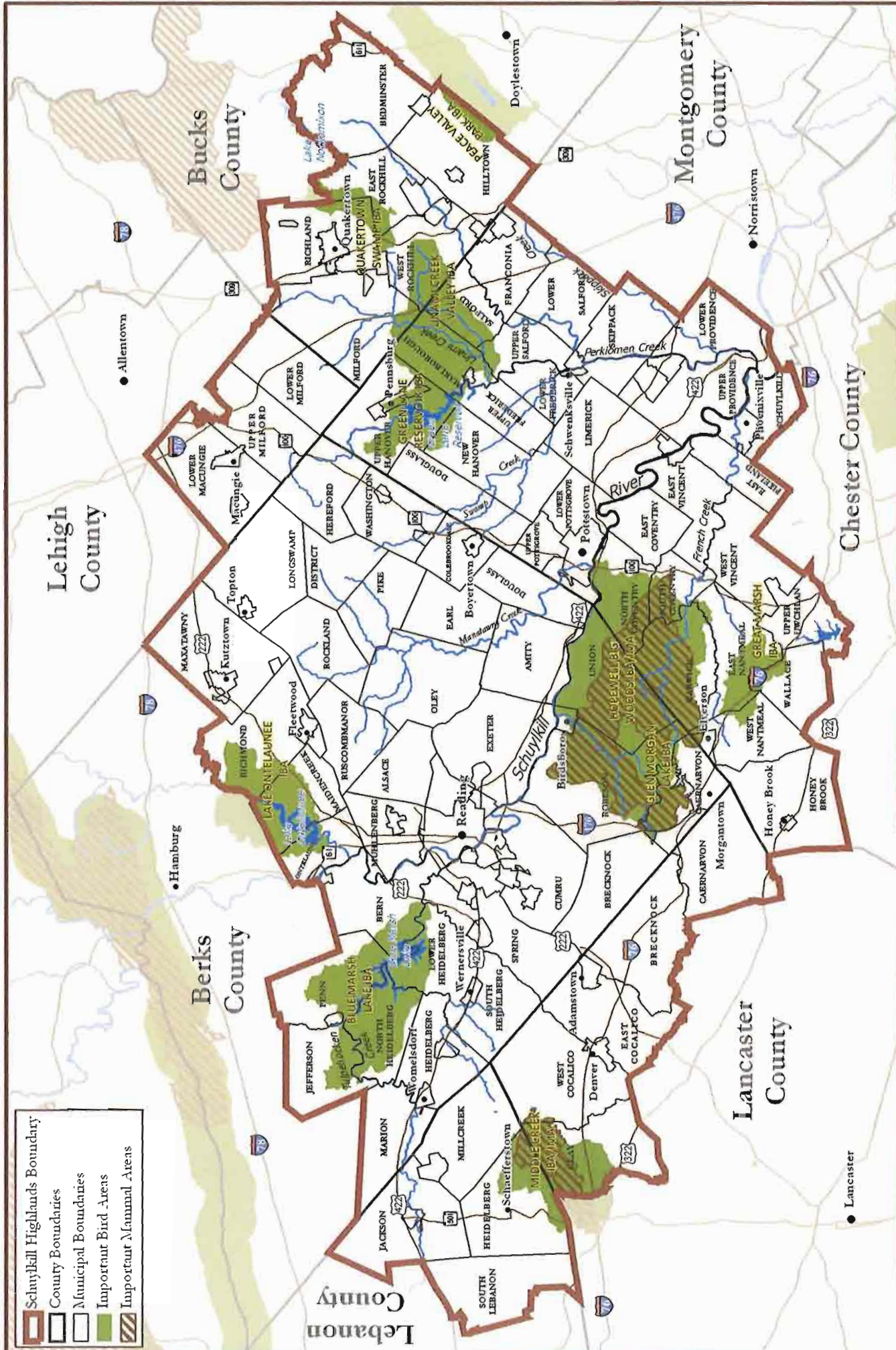
Georgetown Road

Georgetown Road

Georgetown Road

Black Mt. Road

Sycamore Road



- Schuylkill Highlands Boundary
- County Boundaries
- Municipal Boundaries
- Important Bird Areas
- Important Mammal Areas



Important Bird Areas/Important Mammal Areas

SCHUYLKILL HIGHLANDS

Berks, Bucks, Lehigh, Lancaster, Lebanon, Montgomery, and Chester Counties, Pennsylvania



Compiled by MTM 10/20/10

Mill Creek Macroinvertebrate Counts - May 21, 2009

Common and Scientific Names	MC001	MC002	MC003	MC004
Water penny larvae, <i>Psephenidae</i>	11	12	13	20
Mayfly nymphs, <i>Ephemeroptera</i>	100	100	100	100
Stonefly nymphs, <i>Plecoptera</i>	64	21	44	22
Non-net-spinning caddisfly, <i>Trichoptera</i>	26	21	15	30
Fingernet caddisfly larvae, <i>Philopotamidae</i>	100	4	11	36
Free-living caddisfly larvae, <i>Rhyacophilidae</i>				4
Watersnipe fly larvae, <i>Athericidae</i>		1		
Dobsonfly larvae (hellgrammites), <i>Corydalidae</i>		1		
Fishing spiders, <i>Pisauridae</i>				
Gilled snails, Class <i>Gastropoda</i> (subclass <i>Prosobranchia</i>)				
Other beetle larvae, <i>Coleoptera</i>	1	4	8	19
Rifle beetle adult, <i>Elmidae</i> (family)		4	4	11
Other beetle adult, <i>Coleoptera</i>			1	
Cranefly larvae, <i>Tipulidae</i>	1	7	5	4
Damselfly larvae, <i>Odonata</i> (suborder <i>Zygoptera</i>)	1			11
Dragonfly larvae, <i>Odonata</i> (suborder <i>Anisoptera</i>)		7		8
Scuds, <i>Amphipoda</i>	2			
Aquatic sowbugs, <i>Isopoda</i> (family <i>Asellidae</i>)		1		3
Alderfly larvae, <i>Sialidae</i>	2			5
Net-spinning caddisfly larvae, <i>Hydropsychidae</i>	25	3	29	28
Crayfish, <i>Decapoda</i>	1	1	1	1
Water Mites (order <i>Acariformes</i>)				2
Clams, <i>Bivalvia</i>				
Aquatic worms, <i>Oligocheta</i>	5	5	11	4
Blackfly larvae, <i>Simuliidae</i>	23	3	7	1
Leeches, <i>Hirudinea</i>				
Other Midge larvae, (Diptera: <i>Chironomidae</i>)	5	6	8	7
Pouched/Lunged snails, Class <i>Gastropoda</i> (subclass <i>Pulmonata</i>)				
Rat-tailed maggots, (Diptera: <i>Syrphidae</i>)				
Horsefly larvae, (Diptera: <i>Tabanidae</i>)		1		
Flat worms, <i>Turbellaria</i> (class)			1	
Water striders, <i>Gerridae</i>				

Mill Creek Macroinvertebrate Counts - May 21, 2009				
Giant water bugs, <i>Belostomatidae</i>				
Water boatmen, <i>Corixidae</i>				
Total Number of Individuals	367	202	258	316
Mayflies+Stoneflies+Most Caddisflies	290	146	170	192
% Mayflies+Stoneflies+Most Caddisflies*	79.0190736	72.2772277	65.8914729	60.7594937
Total Number of EPT Individuals	315	149	199	220
% Common Netspinners	6.8119891	1.48514851	11.2403101	8.86075949
% Lunged Snails	0.27247956	0.4950495	0.3875969	0.3164557
Total Number of Beetles	12	20	26	50
% Beetles	3.26975477	9.9009901	10.0775194	15.8227848
Total Number of Tolerant	36	22	27	34
% Tolerant	9.80926431	10.8910891	10.4651163	10.7594937
Total Number of Non-Insects	8	7	13	8
% Non-Insects	2.17983651	3.46534653	5.03875969	2.53164557
Total Number of True Flies (Diptera)	29	17	20	12
% True Flies (Diptera)**	7.90190736	8.41584158	7.75193798	3.79746835
EPT/Diptera Ratio***	10.862069	8.76470588	9.95	18.3333333
Total Caddisflies (Tricoptera)	151	28	55	98
% Hydropsychidae to Tricoptera	16.5562914	10.7142857	52.7272727	28.5714286
% Plecoptera	17.4386921	10.3960396	17.0542636	6.96202532
% Chironomidae	1.36239782	2.97029703	3.10077519	2.21518987

Mill Creek Macroinvertebrate Summary Data. May 21, 2009

	MC001	MC002	MC003	MC004
Total Number of EPT Individuals	315	149	199	220
% Common Netspinners	6.811989	1.485149	11.24031	8.860759
% Lunged Snails	0.27248	0.49505	0.387597	0.316456
Total Number of Beetles	12	20	26	50
% Beetles	3.269755	9.90099	10.07752	15.82278
Total Number of Tolerant	36	22	27	34
% Tolerant	9.809264	10.89109	10.46512	10.75949
Insects	8	7	13	8
% Non-Insects	2.179837	3.465347	5.03876	2.531646
Total Number of True Flies (Diptera)	29	17	20	12
% True Flies (Diptera)**	7.901907	8.415842	7.751938	3.797468
EPT/Diptera Ratio***	10.86207	8.764706	9.95	18.33333
Total Caddisflies (Trichoptera)	151	28	55	98
% Hydropsychidae to Trichoptera	16.55629	10.71429	52.72727	28.57143
% Plecoptera	17.43869	10.39604	17.05426	6.962025
% Chironomidae	1.362398	2.970297	3.100775	2.21519

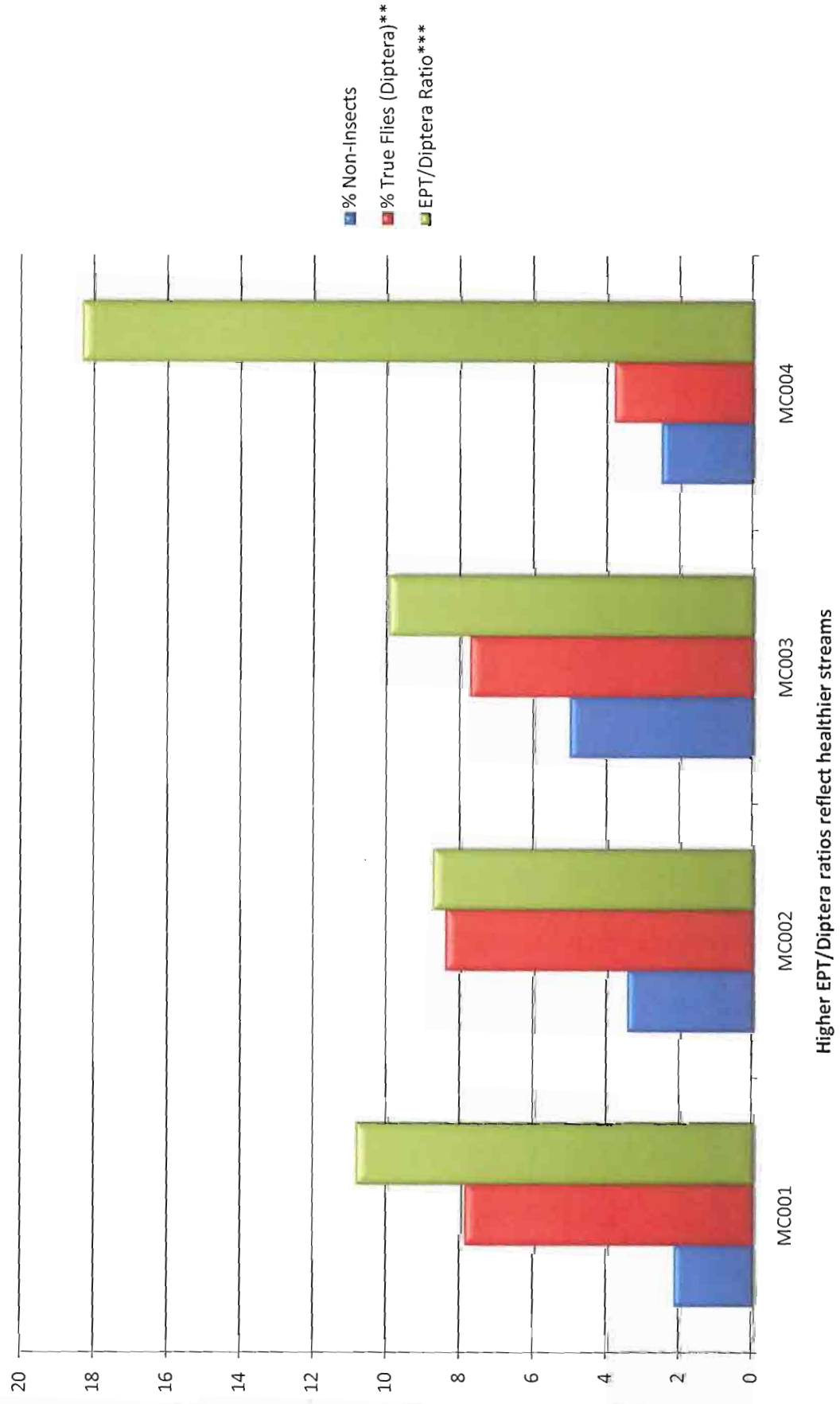
raw data of 100 equals greater than 100 individuals present in sample

* Ratios of 50% or greater are good. Values between 50% and 25% are moderate. Values below 25% are poor

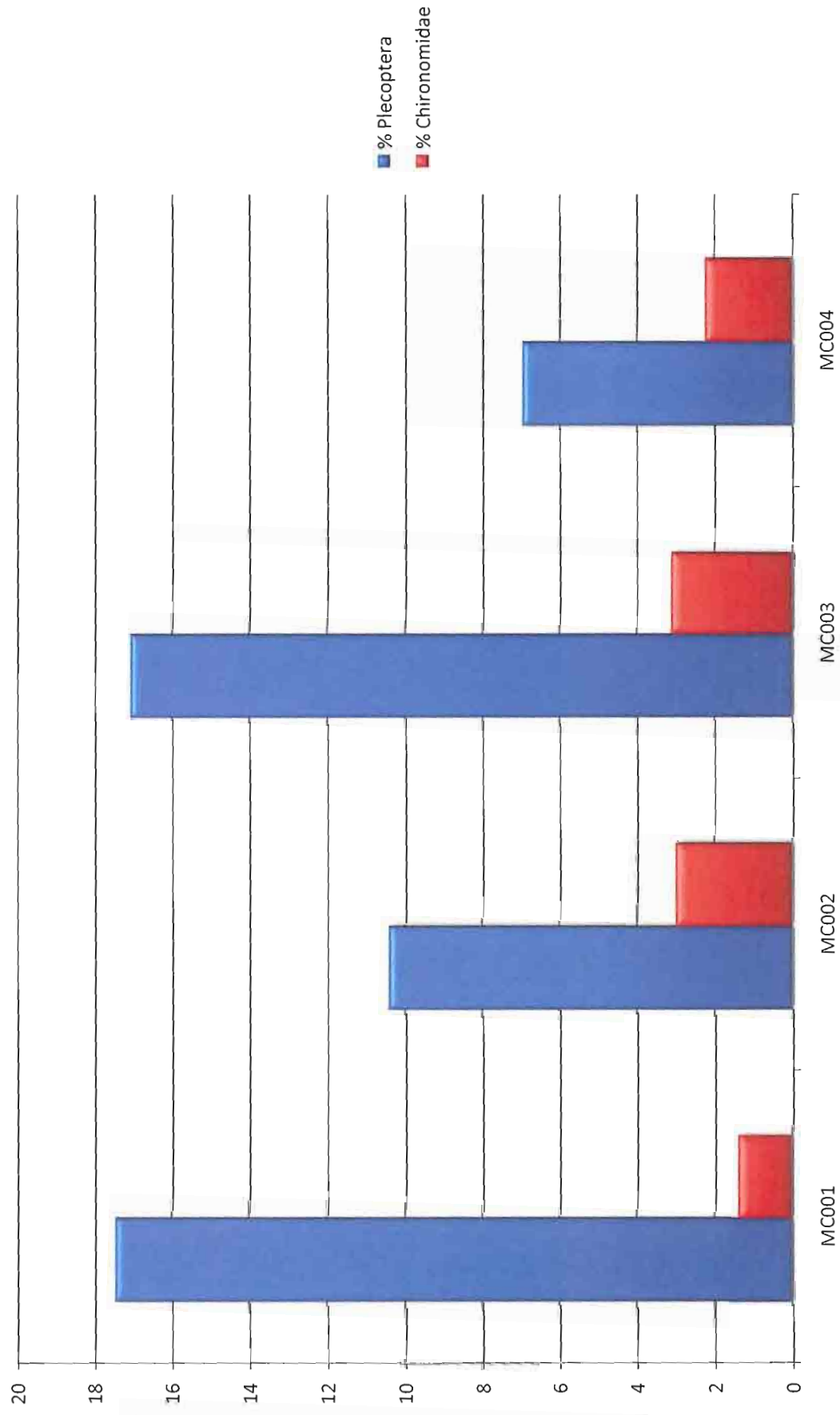
** If the value is greater than 40%, then conditions are poor. If the value is between 20 and 40%, then conditions are moderate. If the value is less than 20%, then conditions are good.

*** The higher the number, the healthier the stream

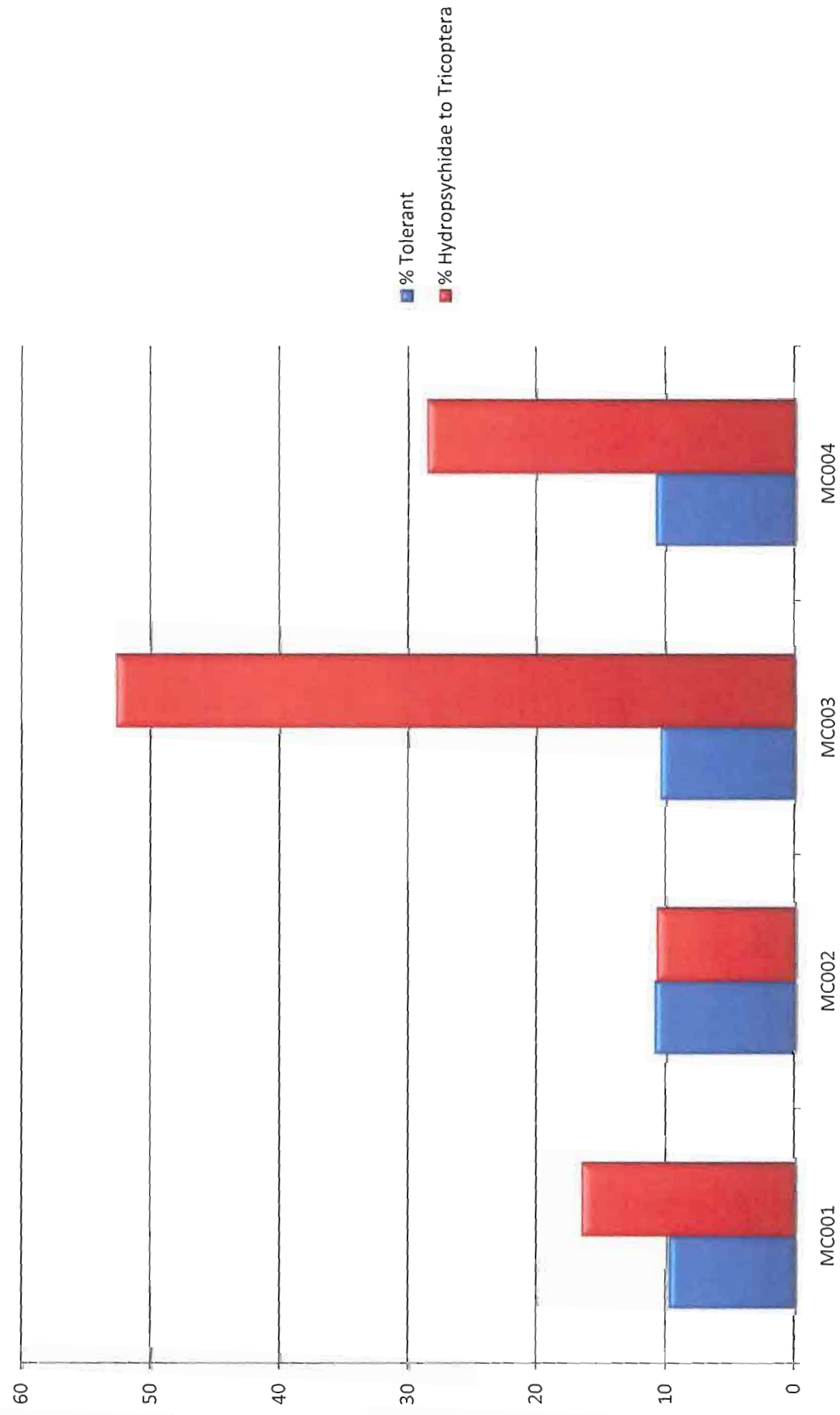
Composition Measures



Composition Analysis



Tolerance Measures



Field Form: Wadeable Streams

19980828-1306-GLW		State Water Plan 03D		Survey Type Unassessed Screening	
Secondary Station ID Unt Schuylkill@Unionville		Stream Code			
Residential	%	Commercial	%	Industrial	%
Abd. Mining	%	Old Fields	%	Forest	%
				Cropland	%
				Pasture	%
				Other	%
<input type="checkbox"/>		1. Abundance obviously low.			
<input type="checkbox"/>		2. Seven or fewer Families in the collection			
<input type="checkbox"/>		3. Three or fewer mayfly individuals; excluding Baetidae, Caenidae, and Siphonuridae			
<input checked="" type="checkbox"/>		4. Stoneflies collectively present			
<input checked="" type="checkbox"/>		5. Mayflies and caddisflies are collectively abundant; excluding Baetidae, Caenidae, Siphonuridae, Hydropsychidae, and Polycentropodidae			
<input checked="" type="checkbox"/>		6. July thru September: at least 4 EPT Families with Hilsenhoff of 4 or less November Thru May: at least 6			
<input checked="" type="checkbox"/>		7. 4 or more Families with Hilsenhoff of 3 or less			
<input checked="" type="checkbox"/>		8. 6 or more Families with Hilsenhoff of 4 or less			
<input checked="" type="checkbox"/>		9. Dominant Family with Hilsenhoff of 4 or less			
<input type="checkbox"/>		10. Dominant Family with Hilsenhoff greater than 5 (Criteria 7 and 8 negate this criterion)			
<input type="checkbox"/>		11. 7 or more families with Hilsenhoff of 6 or more (Criteria 7 and 8 negate this criterion)			
<input type="checkbox"/>		12. Sample dominated by families with a mean Hilsenhoff of 5 or less			
<input type="checkbox"/>		13. Sample dominated by families with a mean Hilsenhoff of 6 or more			
<input type="checkbox"/>		14. [#3 Riff/Run: embeddedness or #3 Glide/Pool: Substrate Character]+ #6 Sediment Deposition 24 or less (20 or less for warm water, low gradient streams)			
<input type="checkbox"/>		15. #9 Condition of banks + #10 Bank Vegetation 24 or less (20 or less for warm water, low gradient streams)			
<input type="checkbox"/>		16. Total Habitat score 140 or less for forested, cold water, high gradient streams (120 or less for warm water low gradient streams)			
<input type="checkbox"/>		17. Special Conditions. (Left Box OK, Right Box Impaired) DESCRIBE IN COMMENTS			
Not Impaired	<input checked="" type="checkbox"/>	Impaired Biology	<input type="checkbox"/>	Impaired Habitat	<input type="checkbox"/>
				Rock Picks Influenced Assessment?	<input type="checkbox"/>
				Impact is localized	<input type="checkbox"/>
				Reevaluate Designated Use?	<input type="checkbox"/>
1 Instream Cover		16	2 Epifaunal Substrate		16
3 Embeddedness		14	4 Velocity/Depth Regimes		16
5 Channel Alterations		16	6 Sediment Deposition		18
7 Frequency of Riffles		18	8 Channel Flow Status		16
9 Condition of Banks		15	10 Bank Vegetation		15
11 Grazing or Disruptive		10	12 Riparian Vegetation		9
			Total		179
pH:		DO (mg/l):		Chem Sample IDs	
Temp (C):		Flow (cfs):			
Cond (umhos):		Alkalinity (mg/l):			

Field Form: Wadeable Streams

COMMENTS

Location:

The assessment station was located approximately 125 meters upstream of bridge on PA 724 over unnamed tributary to Schuylkill River at Unionville (Berks County). Pottstown Quad, top left quarter at top left corner.

Land Use

Special Condition

Impairment

Unnamed tributary to Schuylkill River is not impaired.

**Invertebrates,
Habitat, and Fish**

Unassessed Taxa

Station ID					
19980828-1306-GLW	Code	Name	Abundance	Range	Hilsenhoff Score
	5	Oligochaeta	P	3-9	10
	21	Amphipoda	P	3-9	6
	25	Cambaridae	P	3-9	6
	27	Baetidae	C	10-24	6
	30	Ephemerellidae	P	3-9	2
	32	Heptageniidae	A	25-100	3
	33	Isonychiidae	A	25-100	3
	34	Leptophlebiidae	R	<3	4
	44	Gomphidae	R	<3	4
	50	Chloroperlidae	P	3-9	0
	52	Nemouridae	P	3-9	2
	54	Perlidae	A	25-100	3
	60	Elmidae	C	10-24	5
	63	Psephenidae	C	10-24	4
	68	Sialidae	P	3-9	6
	70	Brachycentridae	R	<3	1
	71	Glossosomatidae	C	10-24	0
	73	Hydropsychidae	C	10-24	5
	77	Limnephilidae	R	<3	4
	80	Philopotamidae	C	10-24	3
	84	Rhyacophilidae	R	<3	1
	98	Tipulidae	R	<3	4

Final Report

**Natural Resources Inventory and
Management Recommendations
for
French Creek State Park**



**Submitted to the Pennsylvania Department of Conservation and Natural Resources,
Bureau of State Parks**

**By Timothy A. Block and Ann F. Rhoads
Morris Arboretum of the University of Pennsylvania
100 Northwestern Ave., Philadelphia, PA 19118
215-247-5777 x 130, block@pobox.upenn.edu**

July 2008

Mill Creek Critical Resource Area

This habitat area occupies 511 acres in the valley of Mill Creek and several small tributary streams as well as the adjacent valley slopes (Figure 12). Mill Creek is shown, but not named on the USGS Pottstown Quadrangle map; it drains the northeastern corner of the park east of Miller Point. Mill Creek originates in an extensive diabase boulder field; the course of the stream follows the diabase dike to a point east of Miller Point where it enters a band of Hammer Creek conglomerate before leaving the park. The headwaters of Mill Creek are in Chester County, but the stream flows through a portion of Berks County before joining the Schuylkill River just west of Unionville. This tract is contained within the Mill Creek Low Density Management Area as defined in the 1996 Resource Management Plan for French Creek State Park.



View to the east from Miller Point

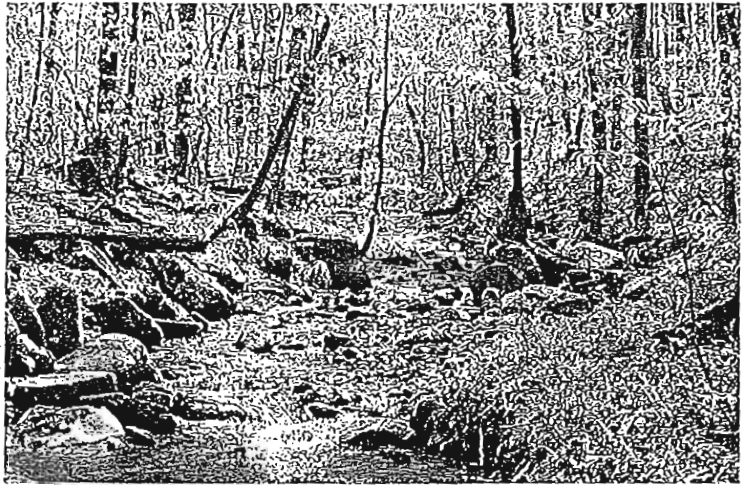
Numerous springs and seeps emanate from the west valley wall creating wetlands crisscrossed by boggy rivulets and intervening hummocks. More upland conditions occur on the adjacent slopes. Tree cover in the valley is **red oak - mixed hardwood forest** containing red oak, white ash, tuliptree, American elm, yellow birch, American beech, red maple, hop hornbeam, and shrubs such as blackhaw, spicebush, black elderberry, and bladdernut. Forest cover on upper slopes is **dry oak - mixed hardwood forest** (vulnerable – S3). Areas of **skunk-cabbage - golden saxifrage forest seep** area also present.

Diversity of herbaceous species is high and includes three PNHP-listed species: a population of about 300 plants of nodding trillium (N/TU), several hundred southern adder's-tongue ferns (watchlist), and a small colony of crane-fly orchid (PR). See species fact sheets in Appendix C for more information.

Other wildflowers present include bishop's-cap, dwarf ginseng, wood anemone, spring-beauty, turtlehead, common blue violet, blue marsh violet, American dog violet, downy yellow violet, skunk-cabbage, jack-in-the-pulpit, wild ginger, golden saxifrage, mayapple, bloodroot, Canada mayflower, black cohosh, stoneroot, trout-lily, false Solomon's-seal, sessile-leaved bellwort, wreath goldenrod, and enchanter's-nightshade. Ferns are also diverse and include in addition to the southern adder's-tongue: sensitive fern, New York fern, Christmas fern, silvery glade fern rattlesnake fern, cut-leaved grape fern, and broad beech fern.

We have no data on fauna for this site specifically, but by all appearances it is promising habitat for amphibians and for birds that utilize riparian areas.

Invasive species are minimal overall; the few scattered wineberry shrubs and occasional small shoots of Japanese honeysuckle that we noted pose little or no threat. However, along the west valley wall slope there are several patches of winged euonymus that are of concern due to ability of this species to spread rapidly, even in shaded sites.



Mill Creek

Although over browsing was very evident on adjacent uplands to the west, the herbaceous flora in the valley did not appear to be seriously impacted during our May 2007 visit. However, this situation could change.

Recommendations

- Do not extend trails into the lower section of the Mill Creek valley; the valley floor is much too fragile to support concentrated foot traffic.
- Eradicate winged euonymus on adjacent slopes.
- Conduct surveys of birds, reptiles, amphibians, and selected invertebrates.
- Survey plants again in mid to late summer.
- Monitor deer impact on herbaceous flora in the valley.
- Encourage deer hunting in the valley and on adjacent upland areas to the west by allowing hunters to drive in to the powerline right-of-way or facilitating access from the east.
- Protect the hydrology of the valley by maintaining forest cover on adjacent slopes and uplands.
- Manage the existing trail crossings of Mill Creek to reduce erosion and resulting degradation of water quality.
- Actively discourage informal camping in this area. A cleared campsite with fire pit was in use on the west side of the creek just below the lower trail crossing in the spring of 2007.

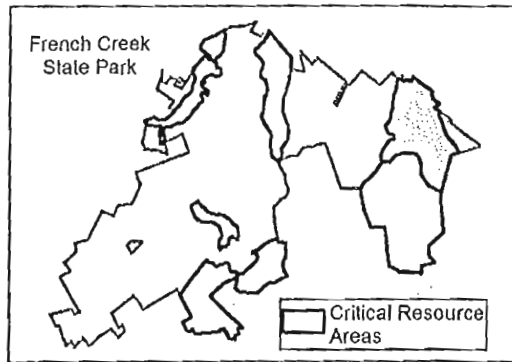
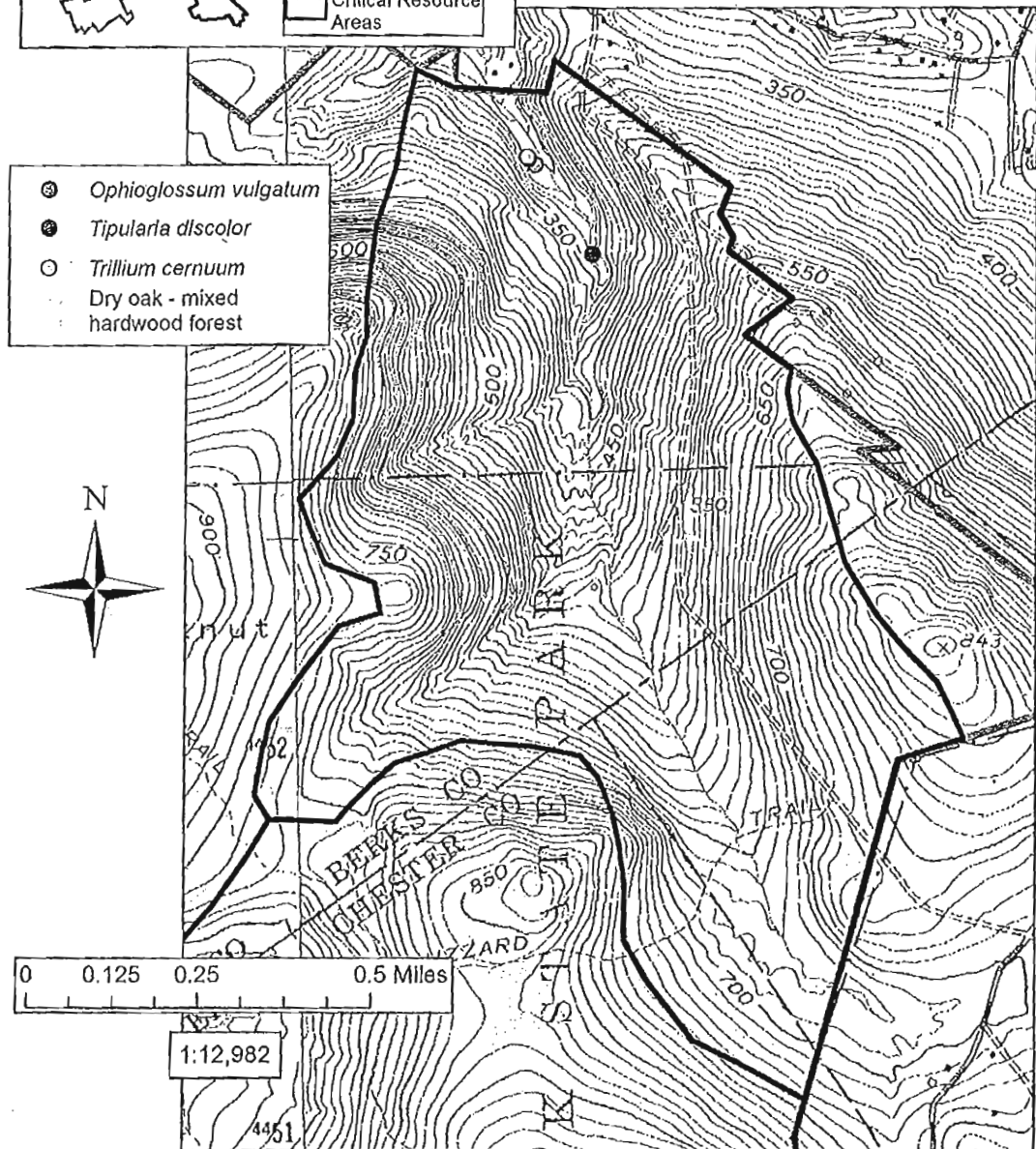


Figure 12.
**Mill Creek
 Critical Resource Area**

French Creek State Park



Mill Creek from management plan.

Subject: Mill Creek from management plan.
From: "Brown, Eric" <erbrown@state.pa.us>
Date: Thu, 24 Feb 2011 10:44:08 -0500
To: 'Faith Zerbe' <faith@delawareriverkeeper.org>

MILL CREEK LOW DENSITY AREA MANAGEMENT UNIT

4804.600

Description

Located to the east of PA Route 345, the Mill Creek Low Density Area encompasses 2,527 acres of forested terrain that is virtually undeveloped. It is bounded on the south, west, and east by the park boundary, and on the north by Shed Road. The unit adjoins Hopewell Furnace National Historic Site from Shed Road south to Hopewell Road.

The large, rounded hills within the unit are heavily covered by tulip-tree and a mixture of oaks, red maple, hickory, and birch. Mountain laurel is quite abundant on the eastern side of the unit. Undergrowth is thicker on the east than on the west, apparently because the western side is over browsed by deer. The western side of this unit borders Hopewell Furnace, which, by not allowing hunting, increases the size of the deer population. Vegetation studies are underway at Hopewell Furnace to determine the impact of the deer herd on vegetation. There are no open fields in the unit, with the exception of the electric utility line corridor.

Extensive evidence of charcoal production can be seen in the forests. Deeply cut charcoal haul roads climb the hillsides, radiating out from the former furnace operations at Hopewell. Charcoal hearths and the remains of colliers' huts can be found throughout the entire unit.

Baptism Creek and Mill Creek are the two main drainages within the unit. Both streams are pristine since they are well protected from outside influences until they flow out of the park. Baptism Creek drains a large, round, rocky bowl to the east of Hopewell Furnace, with the main stream crossing Hopewell Road near Route 345. The stream was used during iron producing times to drive the water wheel at the furnace. The millrace that carried the water to the furnace is still visible and is being protected by Hopewell Furnace through restricted access and limited development.

The main tributary of Mill Creek originates just outside of the park boundary and flows along an extremely rocky course, running due north inside the park, near the eastern boundary. In some areas, the stream flows under the rocks and is not visible from above. The other major fork drains the slopes of Willis Knob and Round Top, in the central portion of the unit. Due to its pristine nature, the Nature Conservancy has recommended protection of Mill Creek from the point it leaves the park to its juncture with the Schuylkill River.

The Lenape, Mill Creek, Raccoon, and Buzzard trails are located within the unit. Due to the size and undeveloped nature of this unit, the trails provide hikers with more of a backcountry type experience than the trails on the developed western and northern portions of the park. Every effort should be made to retain the pristine nature of this area by controlling development.

The Raccoon Trail and the Yellow and Red that lead into Hopewell Furnace National Historic Site are designated hiking and cross-country skiing only. Mill Creek Trail and all of Buzzards Trail are open to mountain biking, as well as hiking and cross-country skiing. Metropolitan Edison Company has an electric transmission line. The right-of-way is 100 feet in width.

Management Unit Objectives

To preserve the undeveloped, wild nature of the unit.

To protect the vegetative composition of this unit in order to encourage biological diversity.

To preserve and protect the natural resources in the unit from damage and/or destruction by fires, insects, disease, wildlife, and outside influences.

To provide for quality recreation, environmental study, and other healthful outdoor activities.

To preserve and interpret the cultural resources found within the unit.

To remove the abandoned brick incinerator on Shed Road and restore the area to a more natural state.

Prescriptions

Trails

Mountain bikes will be excluded from sections of trail that lead directly into Hopewell Furnace, where bikes are not permitted on the trails. This would include the western portions of the Raccoon and Buzzard trails.

The main trunks of the Mill Creek Trail, Buzzard Trail, and an unnamed old road at the eastern boundary should be kept clear of blow downs in order to allow access by vehicles in the case of fire. Since these sections of trail are actually abandoned roads, motorized equipment can be used occasionally for trail maintenance where adequate clearance and trail surface exists. Care must be exercised so as not to degrade the wild nature of the unit through the use of equipment. Motorized equipment should be kept out of wet areas and streams when possible.

The tread of the trails should be maintained at 4 feet, with horizontal clearance being 2 feet on either side of the trail, conditions permitting. The clearing height should not exceed 8 feet.

Trails should be inspected regularly, especially after severe storms, for erosion and problems repaired promptly.

The section of the Mill Creek Trail located just south of Millers Point is very steep and prone to erosion. Corrective work is needed here to prevent further damage. Another portion of the Mill Creek Trail passes through several springs and intermittent streams between Millers Point and Mill Creek. Work is needed here to improve drainage and to install a bog boardwalk or bridges.

Trails should be inspected, especially after severe storms, for hazardous trees and limbs. Remove all hazardous trees and limbs that will affect trail usage. Solid dead trees may be left for wildlife use for several years, but should be removed when their condition becomes hazardous to trail users.

A review will be conducted in the fall of 1997 to see if the trails are being maintained adequately and not degrading the natural resources.

Vegetation Management

The native vegetation in forested areas will be maintained and natural succession will be allowed to continue.

No timber harvesting is to be conducted without prior approval of the Resources Management Section.

Wildlife

The entire unit is open to hunting.

Rights-of-Way

Metropolitan Edison maintains a large right-of-way for its power line, located on the eastern portion of the unit. Any maintenance required by the utility companies shall be completed in accordance with Bureau Management Manual, Volume II, and Sections 2020.30 to 2020.042.

Access to the power line, and an electric meter located at Hopewell Furnace's radio tower next to the power line, is permitted on the road adjacent to the park boundary. The road starts near the intersection of Shed Road and Route 345 and extends past the power line. The Mill Creek and Lenape trails follow this road. Access is restricted to the power company, Hopewell Furnace, and park staff.

Philadelphia Electric Company maintains an early warning siren for its Limerick Power Plant at the same location as Hopewell's radio tower. Although the siren is located on Hopewell property, access is on the same road described above, which is on parkland.

Wetlands

Wetlands are scattered throughout the entire unit adjacent to springs and seeps. Wetlands are also located along Baptism and Mill Creek drainages, particularly so in the eastern portion of the Baptism Creek watershed. A vernal pond is found along the Mill Creek Trail near the top of Chestnut Hill. No new trail construction shall be permitted in any area determined to be a wetland. Bridges or elevated tread ways should be installed on existing trails where they cross-wetlands or the trail should be relocated to avoid wetlands where possible.

Mill Creek from management plan.

Eric M. Brown
Park Manager
French Creek State Park Complex
Elverson, PA 19520
610-582-9680
Fax 610-582-9692

No virus found in this incoming message.

Checked by AVG - www.avg.com

Version: 9.0.872 / Virus Database: 271.1.1/3465 - Release Date: 02/24/11 02:34:00

Photos of Mill Creek May 21, 2009.



Ryan Zerbe, BCCD conducts benthic sampling at station MC004

Photos of Mill Creek May 21, 2009.



Mill Creek Sample Macroinvertebrate Station MC001, facing downstream

Photos of Mill Creek May 21, 2009.



Mill Creek Station MC001 – water quality monitoring, facing US Faith Zerbe, DRN

Photos of Mill Creek May 21, 2009.



Macroinvertebrates present at Station MC004 – released unharmed back to stream

Photos of Mill Creek May 21, 2009.



Macroinvertebrate count. Eric Konzelmann, Chari Towne, and Faith Zerbe

Photos of Mill Creek May 21, 2009.



Examining the kick net. Ryan Zerbe, BCCD

TOWNSHIP OF
UNION *Berks County, PA*
Environmental Advisory Council

1445 E. Main St., Douglassville PA 19518
(610) 582-3769 (610) 385-3769
Fax (610) 582-4737

COUNCIL MEMBERS

Marie Rehr
Eric Konzelmann
Perry Templin
Tammy Mathews
Mary Picariello

Delaware Riverkeeper Network

Faith Zerbe

300 Pond Street, 2nd Floor

Bristol, PA 19007

Dear Faith,

The Union Township Environmental Advisory Council (EAC) supports the petition to upgrade the designation of the Mill Creek in Union Township, Berks County. The EAC recognizes the importance to protect a stream of this quality and to help preserve the existing forest buffer along most of its banks. The Mill Creek headwaters are located within the protected area of the French Creek State Park. If upgraded to special protection status, we would help ensure the remainder of the stream receives the critical attention it needs to keep the high quality of water within the stream.

The EAC would be proud and pleased to be a co-sponsor in the petition to upgrade the designated and/or existing use designation of the Mill Creek. Keep up the good work and together we can protect our environment for generations to come.

Thank You,

Eric Konzelmann

Eric Konzelmann, EAC Secretary



pennsylvania

DEPARTMENT OF CONSERVATION
AND NATURAL RESOURCES

French Creek State Park
843 Park Road
Elverson, PA 19520-9523
February 24, 2011

610-582-9680

Faith Zerbe
Delaware Riverkeeper Network
300 Pond Street, Second Floor
Bristol PA 19007

Dear Ms. Zerbe,

This letter serves as support for the stream upgrade to Mill Creek within French Creek State Park. The exceptional value of this stream and surrounding area is now documented and I will forward any of these documents we have in order to support this endeavor. It is our sincere hope this will assist you in making the upgrade a reality.

Sincerely,

A handwritten signature in black ink that reads 'Eric M. Brown'. The signature is fluid and cursive, with the first letters of the first and last names being capitalized and prominent.

Eric M. Brown
Park Manager
French Creek State Park



**BERKS COUNTY
CONSERVATION DISTRICT**

Conserving Natural Resources for Our Future

January 21, 2011

Delaware Riverkeeper Network
300 Pond Street, Second Floor
Bristol, PA 19007



Attn: Faith Zerbe

On behalf of the Berks County Conservation District, I would like to extend our support to the petition to upgrade the designation of the Mill Creek in Union Township, Berks County.

The Berks County Conservation District recognizes the importance to protect a stream of this quality and to help preserve its characteristics. The Mill Creek headwaters begin within the boundaries of French Creek State Park and the watershed has approximately 73% forest canopy. In 2009, a macroinvertebrate study of the stream indicated exceptional results in quality.

The Berks County Conservation District is pleased to be part of the petition to upgrade the designated and/or existing use designation of the Mill Creek. Please let me know if the Berks County Conservation District can be of any assistance to the process.

Thank You,

Joseph Crea
District Manager
Berks County Conservation District





We're saving a place for you...

25 North 11th Street, Reading, PA 19601
610-372-4992 tel · 610-372-2917 fax
email: info@berks-conservancy.org
web: www.berks-conservancy.org

Sent electronically

November 20, 2009

Union Township Environmental Advisory Council
177 Center Road
Douglassville, PA 19518

Re: Letter of Support- Mill Creek Upgrade- Union Township

Dear Environmental Advisory Council:

On behalf of the Berks County Conservancy, I would like to extend our support to upgrade the Mill Creek Chapter 93 designation in Union Township. The Mill Creek headwaters begin within the boundaries of French Creek State Park and the watershed has approximately 73% forest canopy. A benthic study of the stream in the summer of 2009 showed exceptional results in quality. The existing creek quality is not reflective of its current designation.

As you know we work closely with many partners, municipalities and the County to create and promote conservation throughout Berks County, and are very interested in improving water quality, enhancing aquatic habitat and restoring streams. It is gratifying to see municipalities, such as yours, taking a leadership role in planning for the protection and conservation of important natural resources

Should we be able to assist you in any way, please do not hesitate to contact us.

Very Truly Yours,

Lorri K. Swan, MPA
Vice President for Conservation Programs
Berks County Conservancy

Delaware Riverkeeper Network

From: <jjrosenthal@comcast.net>
Date: Wednesday, January 12, 2011 10:38 PM
To: <dm@delawariverkeeper.org>
Subject: Urgent Letters to be mailed for -Speak Up for Mill Creek
the Delaware Riverkeeper Maya K. van Rossum
300 Pond Street
2nd Floor
Bristol, PA 19007

Dear Maya,

I live in the Delaware River Watershed & believe that Mill Creek, a tributary that feeds the Schuylkill River, is deserving of a stream redesignation to Exceptional Value Status.

Mill Creek in Union Township is part of the Schuylkill Highlands. It is near other special protection streams and it is critical that DEP upgrades this stream. I join with Delaware Riverkeeper Network as a co-petitioner to the Mill Creek upgrade petition.

Please include this letter in the Mill Creek re-designation petition to the Pennsylvania Department of Environmental Protection.

Jim Rosenthal
1904 Cardinal Lake Dr.
Cherry Hill, NJ, 08003

Delaware Riverkeeper Network

From: <kdarlington@yahoo.com>
Date: Wednesday, January 12, 2011 11:24 PM
To: <dm@delawareriverkeeper.org>
Subject: Urgent Letters to be mailed for -Speak Up for Mill Creek
the Delaware Riverkeeper Maya K. van Rossum
300 Pond Street
2nd Floor
Bristol, PA 19007

Dear Maya,

As a resident of the Delaware River Watershed, I am delighted to see that one of the tributaries that feeds the Schuylkill River is deserving of a stream redesignation to Exceptional Value Status.

Mill Creek in Union Township is part of the Schuylkill Highlands and a treasure for those who visit favorite places like French Creek State Park. It is surrounded by many other special protection streams and it is critical that DEP upgrades this stream now. As a resident of the Watershed that wants strong protections for our cleanest streams, I join with Delaware Riverkeeper Network as a co-petitioner to the Mill Creek upgrade petition.

Our freshwater is a precious and finite resource and Pennsylvania is facing tremendous challenges to keep our clean streams clean. This upgrade should be a first step to bringing needed protections and policies to ensure that the obligations of the Clean Water Act and anti-degradation policies are met.

Please include this letter in the Mill Creek redesignation petition to the Pennsylvania Department of Environmental Protection as we work together to protect our cleanest streams.

Keith Darlington
44 Glenloch Way
Malvern, PA, 19355

Delaware Riverkeeper Network

From: <ram3811@comcast.net>
Date: Tuesday, January 18, 2011 8:43 AM
To: <keepermaya@delawariverkeeper.org>
Cc: <drm@delawariverkeeper.org>
Subject: Speak Up for Mill Creek
the Delaware Riverkeeper Maya K. van Rossum
300 Pond Street
2nd Floor
Bristol, PA 19007

Dear Maya,

As a resident of the Delaware River Watershed, I am delighted to see that one of the tributaries that feeds the Schuylkill River is deserving of a stream redesignation to Exceptional Value Status.

Mill Creek in Union Township is part of the Schuylkill Highlands and a treasure for those who visit favorite places like French Creek State Park. It is surrounded by many other special protection streams and it is critical that DEP upgrades this stream now. As a resident of the Watershed that wants strong protections for our cleanest streams, I join with Delaware Riverkeeper Network as a co-petitioner to the Mill Creek upgrade petition.

Our freshwater is a precious and finite resource and Pennsylvania is facing tremendous challenges to keep our clean streams clean. This upgrade should be a first step to bringing needed protections and policies to ensure that the obligations of the Clean Water Act and anti-degradation policies are met.

Please include this letter in the Mill Creek redesignation petition to the Pennsylvania Department of Environmental Protection as we work together to protect our cleanest streams.

Richard Mawson
3811 Karen St
Philadelphia, PA, 19114-2828

Delaware Riverkeeper Network

From: <delbassman@hotmail.com>
Date: Thursday, January 13, 2011 10:14 AM
To: <drm@delawareriverkeeper.org>
Subject: Urgent Letters to be mailed for -Speak Up for Mill Creek
the Delaware Riverkeeper Maya K. van Rossum
300 Pond Street
2nd Floor
Bristol, PA 19007

Dear Maya,

As a resident of the Delaware River Watershed, I am delighted to see that one of the tributaries that feeds the Schuylkill River is deserving of a stream redesignation to Exceptional Value Status.

Mill Creek in Union Township is part of the Schuylkill Highlands and a treasure for those who visit favorite places like French Creek State Park. It is surrounded by many other special protection streams and it is critical that DEP upgrades this stream now. As a resident of the Watershed that wants strong protections for our cleanest streams, I join with Delaware Riverkeeper Network as a co-petitioner to the Mill Creek upgrade petition.

Our freshwater is a precious and finite resource and Pennsylvania is facing tremendous challenges to keep our clean streams clean. This upgrade should be a first step to bringing needed protections and policies to ensure that the obligations of the Clean Water Act and anti-degradation policies are met.

Please include this letter in the Mill Creek redesignation petition to the Pennsylvania Department of Environmental Protection as we work together to protect our cleanest streams.

Jerry Duffy
240 Surrey rd
Warminster, pa, 18974

Delaware Riverkeeper Network

From: <kateshapero@gmail.com>
Date: Monday, January 17, 2011 3:41 PM
To: <keepermaya@delawareriverkeeper.org>
Cc: <dm@delawareriverkeeper.org>
Subject: Speak Up for Mill Creek
the Delaware Riverkeeper Maya K. van Rossum
300 Pond Street
2nd Floor
Bristol, PA 19007

Dear Maya,

As a resident of the Delaware River Watershed, I am delighted to see that one of the tributaries that feeds the Schuylkill River is deserving of a stream redesignation to Exceptional Value Status.

Mill Creek in Union Township is part of the Schuylkill Highlands and a treasure for those who visit favorite places like French Creek State Park. It is surrounded by many other special protection streams and it is critical that DEP upgrades this stream now. As a resident of the Watershed that wants strong protections for our cleanest streams, I join with Delaware Riverkeeper Network as a co-petitioner to the Mill Creek upgrade petition.

Our freshwater is a precious and finite resource and Pennsylvania is facing tremendous challenges to keep our clean streams clean. This upgrade should be a first step to bringing needed protections and policies to ensure that the obligations of the Clean Water Act and anti-degradation policies are met.

Please include this letter in the Mill Creek redesignation petition to the Pennsylvania Department of Environmental Protection as we work together to protect our cleanest streams.

Kate Shapero
1640 S. Camac Street
Philadelphia, PA, 19148

Delaware Riverkeeper Network

From: <janiceannelion@yahoo.com>
Date: Thursday, January 13, 2011 8:49 PM
To: <drn@delawareriverkeeper.org>
Subject: Urgent Letters to be mailed for -Speak Up for Mill Creek
the Delaware Riverkeeper Maya K. van Rossum
300 Pond Street
2nd Floor
Bristol, PA 19007

Dear Maya,

As a resident of the Delaware River Watershed, I am delighted to see that one of the tributaries that feeds the Schuylkill River is deserving of a stream redesignation to Exceptional Value Status.

Mill Creek in Union Township is part of the Schuylkill Highlands and a treasure for those who visit favorite places like French Creek State Park. It is surrounded by many other special protection streams and it is critical that DEP upgrades this stream now. As a resident of the Watershed that wants strong protections for our cleanest streams, I join with Delaware Riverkeeper Network as a co-petitioner to the Mill Creek upgrade petition.

Our freshwater is a precious and finite resource and Pennsylvania is facing tremendous challenges to keep our clean streams clean. This upgrade should be a first step to bringing needed protections and policies to ensure that the obligations of the Clean Water Act and anti-degradation policies are met.

Please include this letter in the Mill Creek redesignation petition to the Pennsylvania Department of Environmental Protection as we work together to protect our cleanest streams.

Janice Lion
356 W. Mt. Airy Ave.
Philadelphia, PA, 19119

Delaware Riverkeeper Network

From: <langodiva92@aol.com>
Date: Monday, January 17, 2011 6:59 PM
To: <drn@delawareriverkeeper.org>
Subject: Urgent Letters to be mailed for -Speak Up for Mill Creek
the Delaware Riverkeeper Maya K. van Rossum
300 Pond Street
2nd Floor
Bristol, PA 19007

Dear Maya,

As a resident of the Delaware River Watershed, I am delighted to see that one of the tributaries that feeds the Schuylkill River is deserving of a stream redesignation to Exceptional Value Status.

Mill Creek in Union Township is part of the Schuylkill Highlands and a treasure for those who visit favorite places like French Creek State Park. It is surrounded by many other special protection streams and it is critical that DEP upgrades this stream now. As a resident of the Watershed that wants strong protections for our cleanest streams, I join with Delaware Riverkeeper Network as a co-petitioner to the Mill Creek upgrade petition.

Our freshwater is a precious and finite resource and Pennsylvania is facing tremendous challenges to keep our clean streams clean. This upgrade should be a first step to bringing needed protections and policies to ensure that the obligations of the Clean Water Act and anti-degradation policies are met.

Please include this letter in the Mill Creek redesignation petition to the Pennsylvania Department of Environmental Protection as we work together to protect our cleanest streams.

Gina Flores
PO Box 934
milford, pa, 18337

Delaware Riverkeeper Network

From: <henrydsilva@comcast.net>
Date: Monday, January 17, 2011 5:25 PM
To: <keepennaya@delawareriverkeeper.org>
Cc: <dm@delawareriverkeeper.org>
Subject: Speak Up for Mill Creek

the Delaware Riverkeeper Maya K. van Rossum
300 Pond Street
2nd Floor
Bristol, PA 19007

Dear Maya,

As a resident of the Delaware River Watershed, I am delighted to see that one of the tributaries that feeds the Schuylkill River is deserving of a stream redesignation to Exceptional Value Status.

Mill Creek in Union Township is part of the Schuylkill Highlands and a treasure for those who visit favorite places like French Creek State Park. It is surrounded by many other special protection streams and it is critical that DEP upgrades this stream now. As a resident of the Watershed that wants strong protections for our cleanest streams, I join with Delaware Riverkeeper Network as a co-petitioner to the Mill Creek upgrade petition.

Our freshwater is a precious and finite resource and Pennsylvania is facing tremendous challenges to keep our clean streams clean. This upgrade should be a first step to bringing needed protections and policies to ensure that the obligations of the Clean Water Act and anti-degradation policies are met.

Please include this letter in the Mill Creek redesignation petition to the Pennsylvania Department of Environmental Protection as we work together to protect our cleanest streams.

Henry D'Silva
6 Jefferson Court
Newtown, PA, 18940

Delaware Riverkeeper Network

From: <kim.a.white@gmail.com>
Date: Sunday, January 16, 2011 10:14 PM
To: <dm@delawareriverkeeper.org>
Subject: Urgent Letters to be mailed for -Speak Up for Mill Creek
the Delaware Riverkeeper Maya K. van Rossum
300 Pond Street
2nd Floor
Bristol, PA 19007

Dear Maya,

As a resident of the Delaware River Watershed, I am delighted to see that one of the tributaries that feeds the Schuylkill River is deserving of a stream redesignation to Exceptional Value Status.

Mill Creek in Union Township is part of the Schuylkill Highlands and a treasure for those who visit favorite places like French Creek State Park. It is surrounded by many other special protection streams and it is critical that DEP upgrades this stream now. As a resident of the Watershed that wants strong protections for our cleanest streams, I join with Delaware Riverkeeper Network as a co-petitioner to the Mill Creek upgrade petition.

Our freshwater is a precious and finite resource and Pennsylvania is facing tremendous challenges to keep our clean streams clean. This upgrade should be a first step to bringing needed protections and policies to ensure that the obligations of the Clean Water Act and anti-degradation policies are met.

Please include this letter in the Mill Creek redesignation petition to the Pennsylvania Department of Environmental Protection as we work together to protect our cleanest streams.

Kimberly White
2295 Wells Rd.
Pottstown, 19465,

Delaware Riverkeeper Network

From: <nailbunnypd@gmail.com>
Date: Monday, January 17, 2011 12:01 AM
To: <drn@delawareriverkeeper.org>
Cc: <keepermaya@delawareriverkeeper.org>; <tracy@delawareriverkeeper.org>
Subject: Urgent Letters to be mailed for -Proposed Gas Drilling Rules Issued Prematurely
 c/o Commission Secretary DRBC Commissioners
 Delaware River Basin Commission
 P.O. Box 7360
 West Trenton, NJ 08628

Dear DRBC Commissioners,

Re: Draft Natural Gas Development Regulations

Please expand the public participation process for the draft natural gas regulations you have published. A 90 day comment period is wholly inadequate. At least six months is needed to allow for broad participation by the interested public in these rules. I will be directly affected by gas drilling and the rules you adopt are crucial to my health and the health and viability of the Delaware River.

Further, verbal testimony is key to the input process, and three hearings will not be at all sufficient to allow sufficient input from the affected public. Public hearings should be held at geographically accessible locations to all who are interested.

- There should be at least one public hearing in each Basin state: Delaware, New Jersey, New York, and Pennsylvania
- There should be at least one public hearing in each of the two largest population centers that rely on Delaware River water supply, New York City and Philadelphia
- Since Pennsylvania is such a large state, one Hearing should be held in the Upper Delaware region, one in the central Watershed area and one in the southeastern area.

The DRBC is at a turning point in watershed management with gas drillers knocking on our door. It is time for the DRBC to take a stand to fully protect the exceptional water quality, valued natural assets and irreplaceable drinking water supply for 15 million people by preventing pollution and avoiding degradation of the Delaware River and its outstanding Watershed from gas drilling. In order to get it right, the public needs and desires to influence that process and meaningfully participate in the decisions that will affect us and future generations, human and nonhuman.

Delaware Riverkeeper Network

From: <btatham100@verizon.net>
Date: Wednesday, January 12, 2011 8:26 PM
To: <drm@delawareriverkeeper.org>
Subject: Urgent Letters to be mailed for -Speak Up for Mill Creek
the Delaware Riverkeeper Maya K. van Rossum
300 Pond Street
2nd Floor
Bristol, PA 19007

Dear Maya,

As a resident of the Delaware River Watershed, I am delighted to see that one of the tributaries that feeds the Schuylkill River is deserving of a stream redesignation to Exceptional Value Status.

Mill Creek in Union Township is part of the Schuylkill Highlands and a treasure for those who visit favorite places like French Creek State Park. It is surrounded by many other special protection streams and it is critical that DEP upgrades this stream now. As a resident of the Watershed that wants strong protections for our cleanest streams, I join with Delaware Riverkeeper Network as a co-petitioner to the Mill Creek upgrade petition.

Our freshwater is a precious and finite resource and Pennsylvania is facing tremendous challenges to keep our clean streams clean. This upgrade should be a first step to bringing needed protections and policies to ensure that the obligations of the Clean Water Act and anti-degradation policies are met.

Please include this letter in the Mill Creek redesignation petition to the Pennsylvania Department of Environmental Protection as we work together to protect our cleanest streams.

Elizabeth Tatham
79 Old Mill Lane
Holland, 18966,

Delaware Riverkeeper Network

From: <Murphyewn@aol.com>
Date: Wednesday, January 12, 2011 8:55 PM
To: <dm@delawariverkeeper.org>
Subject: Urgent Letters to be mailed for -Speak Up for Mill Creek
the Delaware Riverkeeper Maya K. van Rossum
300 Pond Street
2nd Floor
Bristol, PA 19007

Dear Maya,

As a resident of the Delaware River Watershed, I am delighted to see that one of the tributaries that feeds the Schuylkill River is deserving of a stream redesignation to Exceptional Value Status.

Mill Creek in Union Township is part of the Schuylkill Highlands and a treasure for those who visit favorite places like French Creek State Park. It is surrounded by many other special protection streams and it is critical that DEP upgrades this stream now. As a resident of the Watershed that wants strong protections for our cleanest streams, I join with Delaware Riverkeeper Network as a co-petitioner to the Mill Creek upgrade petition.

Our freshwater is a precious and finite resource and Pennsylvania is facing tremendous challenges to keep our clean streams clean. This upgrade should be a first step to bringing needed protections and policies to ensure that the obligations of the Clean Water Act and anti-degradation policies are met.

Please include this letter in the Mill Creek redesignation petition to the Pennsylvania Department of Environmental Protection as we work together to protect our cleanest streams.

Michael J Murphy
149 New Hillcrest Ave
Ewing, NJ, 08638

Delaware Riverkeeper Network

From: <Pounesaberi@yahoo.com>
Date: Monday, January 17, 2011 8:27 AM
To: <keepermaya@delawariverkeeper.org>
Cc: <dm@delawariverkeeper.org>
Subject: Speak Up for Mill Creek
the Delaware Riverkeeper Maya K. van Rossum
300 Pond Street
2nd Floor
Bristol, PA 19007

Dear Maya,

As a resident of the Delaware River Watershed, I am delighted to see that one of the tributaries that feeds the Schuylkill River is deserving of a stream redesignation to Exceptional Value Status.

Mill Creek in Union Township is part of the Schuylkill Highlands and a treasure for those who visit favorite places like French Creek State Park. It is surrounded by many other special protection streams and it is critical that DEP upgrades this stream now. As a resident of the Watershed that wants strong protections for our cleanest streams, I join with Delaware Riverkeeper Network as a co-petitioner to the Mill Creek upgrade petition.

Our freshwater is a precious and finite resource and Pennsylvania is facing tremendous challenges to keep our clean streams clean. This upgrade should be a first step to bringing needed protections and policies to ensure that the obligations of the Clean Water Act and anti-degradation policies are met.

Please include this letter in the Mill Creek redesignation petition to the Pennsylvania Department of Environmental Protection as we work together to protect our cleanest streams.

Poune Saberi
1504 Montrose St
Philadelphia, PA, 19146

Delaware Riverkeeper Network

From: <tehoffman@hotmail.com>
Date: Sunday, January 16, 2011 5:21 PM
To: <keepermaya@delawareriverkeeper.org>
Cc: <drn@delawareriverkeeper.org>
Subject: Speak Up for Mill Creek
the Delaware Riverkeeper Maya K. van Rossum
300 Pond Street
2nd Floor
Bristol, PA 19007

Dear Maya,

As a resident of the Delaware River Watershed, I am delighted to see that one of the tributaries that feeds the Schuylkill River is deserving of a stream redesignation to Exceptional Value Status.

Mill Creek in Union Township is part of the Schuylkill Highlands and a treasure for those who visit favorite places like French Creek State Park. It is surrounded by many other special protection streams and it is critical that DEP upgrades this stream now. As a resident of the Watershed that wants strong protections for our cleanest streams, I join with Delaware Riverkeeper Network as a co-petitioner to the Mill Creek upgrade petition.

Our freshwater is a precious and finite resource and Pennsylvania is facing tremendous challenges to keep our clean streams clean. This upgrade should be a first step to bringing needed protections and policies to ensure that the obligations of the Clean Water Act and anti-degradation policies are met.

Please include this letter in the Mill Creek redesignation petition to the Pennsylvania Department of Environmental Protection as we work together to protect our cleanest streams.

Terry Hoffman
14 Killdeer Lane
Downingtown, PA, 19335-1892

Delaware Riverkeeper Network

From: <mcherry007@VERIZON.NET>
Date: Sunday, January 16, 2011 3:17 PM
To: <keepermaya@delawariverkeeper.org>
Cc: <dtn@delawariverkeeper.org>
Subject: Speak Up for Mill Creek
the Delaware Riverkeeper Maya K. van Rossum
300 Pond Street
2nd Floor
Bristol, PA 19007

Dear Maya,

As a resident of the Delaware River Watershed, I am delighted to see that one of the tributaries that feeds the Schuylkill River is deserving of a stream redesignation to Exceptional Value Status.

Mill Creek in Union Township is part of the Schuylkill Highlands and a treasure for those who visit favorite places like French Creek State Park. It is surrounded by many other special protection streams and it is critical that DEP upgrades this stream now. As a resident of the Watershed that wants strong protections for our cleanest streams, I join with Delaware Riverkeeper Network as a co-petitioner to the Mill Creek upgrade petition.

Our freshwater is a precious and finite resource and Pennsylvania is facing tremendous challenges to keep our clean streams clean. This upgrade should be a first step to bringing needed protections and policies to ensure that the obligations of the Clean Water Act and anti-degradation policies are met.

Please include this letter in the Mill Creek redesignation petition to the Pennsylvania Department of Environmental Protection as we work together to protect our cleanest streams.

michael cherry
617 CRESCENT AVE.
GLENSIDE, PA., 19038

Delaware Riverkeeper Network

From: <janbraker@msn.com>
Date: Saturday, January 15, 2011 5:35 PM
To: <keepermaya@delawariverkeeper.org>
Cc: <drn@delawariverkeeper.org>
Subject: Speak Up for Mill Creek
the Delaware Riverkeeper Maya K. van Rossum
300 Pond Street
2nd Floor
Bristol, PA 19007

Dear Maya,

As a resident of the Delaware River Watershed, I am delighted to see that one of the tributaries that feeds the Schuylkill River is deserving of a stream redesignation to Exceptional Value Status.

Mill Creek in Union Township is part of the Schuylkill Highlands and a treasure for those who visit favorite places like French Creek State Park. It is surrounded by many other special protection streams and it is critical that DEP upgrades this stream now. As a resident of the Watershed that wants strong protections for our cleanest streams, I join with Delaware Riverkeeper Network as a co-petitioner to the Mill Creek upgrade petition.

Our freshwater is a precious and finite resource and Pennsylvania is facing tremendous challenges to keep our clean streams clean. This upgrade should be a first step to bringing needed protections and policies to ensure that the obligations of the Clean Water Act and anti-degradation policies are met.

Please include this letter in the Mill Creek redesignation petition to the Pennsylvania Department of Environmental Protection as we work together to protect our cleanest streams. Let's face it. It's much easier to keep it clean than to try and reclaim it after the water quality is diminished.

Janet Braker
588 Adams Court
Holland, PA, 18966

Delaware Riverkeeper Network

From: <michael.cormican@yahoo.com>
Date: Saturday, January 15, 2011 11:56 AM
To: <keepermaya@delawareriverkeeper.org>
Cc: <dm@delawareriverkeeper.org>
Subject: Speak Up for Mill Creek
the Delaware Riverkeeper Maya K. van Rossum
300 Pond Street
2nd Floor
Bristol, PA 19007

Dear Maya,

As a resident of the Delaware River Watershed, I am delighted to see that one of the tributaries that feeds the Schuylkill River is deserving of a stream redesignation to Exceptional Value Status.

Mill Creek in Union Township is part of the Schuylkill Highlands and a treasure for those who visit favorite places like French Creek State Park. It is surrounded by many other special protection streams and it is critical that DEP upgrades this stream now. As a resident of the Watershed that wants strong protections for our cleanest streams, I join with Delaware Riverkeeper Network as a co-petitioner to the Mill Creek upgrade petition.

Our freshwater is a precious and finite resource and Pennsylvania is facing tremendous challenges to keep our clean streams clean. This upgrade should be a first step to bringing needed protections and policies to ensure that the obligations of the Clean Water Act and anti-degradation policies are met.

Please include this letter in the Mill Creek redesignation petition to the Pennsylvania Department of Environmental Protection as we work together to protect our cleanest streams.

Sincerely,
Michael Cormican

Michael Cormican
1210 Township Line Rd
Chalfont, PA, 18914

Delaware Riverkeeper Network

From: <andrew@andrewmcgrath.com>
Date: Friday, January 14, 2011 5:20 PM
To: <keepermaya@delawareriverkeeper.org>
Cc: <drn@delawareriverkeeper.org>
Subject: Speak Up for Mill Creek
the Delaware Riverkeeper Maya K. van Rossum
300 Pond Street
2nd Floor
Bristol, PA 19007

Dear Maya,

As a resident of the Delaware River Watershed, I am delighted to see that one of the tributaries that feeds the Schuylkill River is deserving of a stream redesignation to Exceptional Value Status.

Mill Creek in Union Township is part of the Schuylkill Highlands and a treasure for those who visit favorite places like French Creek State Park. It is surrounded by many other special protection streams and it is critical that DEP upgrades this stream now. As a resident of the Watershed that wants strong protections for our cleanest streams, I join with Delaware Riverkeeper Network as a co-petitioner to the Mill Creek upgrade petition.

Our freshwater is a precious and finite resource and Pennsylvania is facing tremendous challenges to keep our clean streams clean. This upgrade should be a first step to bringing needed protections and policies to ensure that the obligations of the Clean Water Act and anti-degradation policies are met.

Please include this letter in the Mill Creek redesignation petition to the Pennsylvania Department of Environmental Protection as we work together to protect our cleanest streams.

Andrew McGrath
358 Lombardy Rd
Drexel Hill, PA, 19026

Delaware Riverkeeper Network

From: <bnewell16@gmail.com>
Date: Friday, January 14, 2011 4:50 PM
To: <keepermaya@delawariverkeeper.org>
Cc: <drn@delawariverkeeper.org>
Subject: Speak Up for Mill Creek
the Delaware Riverkeeper Maya K. van Rossum
300 Pond Street
2nd Floor
Bristol, PA 19007

Dear Maya,

As a resident of the Delaware River Watershed, I am delighted to see that one of the tributaries that feeds the Schuylkill River is deserving of a stream redesignation to Exceptional Value Status.

Mill Creek in Union Township is part of the Schuylkill Highlands and a treasure for those who visit favorite places like French Creek State Park. It is surrounded by many other special protection streams and it is critical that DEP upgrades this stream now. As a resident of the Watershed that wants strong protections for our cleanest streams, I join with Delaware Riverkeeper Network as a co-petitioner to the Mill Creek upgrade petition.

Our freshwater is a precious and finite resource and Pennsylvania is facing tremendous challenges to keep our clean streams clean. This upgrade should be a first step to bringing needed protections and policies to ensure that the obligations of the Clean Water Act and anti-degradation policies are met.

Please include this letter in the Mill Creek redesignation petition to the Pennsylvania Department of Environmental Protection as we work together to protect our cleanest streams.

Brendan Newell
107 Hampton Rd.
Westmont, NJ, 08108

Delaware Riverkeeper Network

From: <zoeella@hotmail.com>
Date: Friday, January 14, 2011 3:00 PM
To: <keepermaya@delawariverkeeper.org>
Cc: <drn@delawariverkeeper.org>
Subject: Speak Up for Mill Creek
the Delaware Riverkeeper Maya K. van Rossum
300 Pond Street
2nd Floor
Bristol, PA 19007

Dear Maya,

As a resident of the Delaware River Watershed, I am delighted to see that one of the tributaries that feeds the Schuylkill River is deserving of a stream redesignation to Exceptional Value Status.

Mill Creek in Union Township is part of the Schuylkill Highlands and a treasure for those who visit favorite places like French Creek State Park. It is surrounded by many other special protection streams and it is critical that DEP upgrades this stream now. As a resident of the Watershed that wants strong protections for our cleanest streams, I join with Delaware Riverkeeper Network as a co-petitioner to the Mill Creek upgrade petition.

Our freshwater is a precious and finite resource and Pennsylvania is facing tremendous challenges to keep our clean streams clean. This upgrade should be a first step to bringing needed protections and policies to ensure that the obligations of the Clean Water Act and anti-degradation policies are met.

Please include this letter in the Mill Creek redesignation petition to the Pennsylvania Department of Environmental Protection as we work together to protect our cleanest streams.

Laura Buckingham
269 Buckingham Rd
Honesdale, PA, 18431

Delaware Riverkeeper Network

From: <jmeade@pecpa.org>
Date: Friday, January 14, 2011 2:15 PM
To: <keepermaya@delawariverkeeper.org>
Cc: <drn@delawariverkeeper.org>
Subject: Speak Up for Mill Creek
the Delaware Riverkeeper Maya K. van Rossum
300 Pond Street
2nd Floor
Bristol, PA 19007

Dear Maya,

As a resident of the Delaware River Watershed (North Wales, Montgomery Co.), and Executive Director of the statewide Pennsylvania Organization for Watersheds and Rivers, I am delighted to see that one of the tributaries that feeds the Schuylkill River is deserving of a stream redesignation to Exceptional Value Status.

Mill Creek in Union Township is part of the Schuylkill Highlands and a treasure for those who visit favorite places like French Creek State Park. It is surrounded by many other special protection streams and it is critical that DEP upgrades this stream now. As a resident of the Watershed that wants strong protections for our cleanest streams, I join with Delaware Riverkeeper Network as a co-petitioner to the Mill Creek upgrade petition.

Our freshwater is a precious and finite resource and Pennsylvania is facing tremendous challenges to keep our clean streams clean. This upgrade should be a first step to bringing needed protections and policies to ensure that the obligations of the Clean Water Act and anti-degradation policies are met.

Please include this letter in the Mill Creek redesignation petition to the Pennsylvania Department of Environmental Protection as we work together to protect our cleanest streams.

Jonathan Meade
130 Locust Street, Suite 200
Harrisburg, PA, 17101

Delaware Riverkeeper Network

From: <EmilyMullerL@msn.com>
Date: Friday, January 14, 2011 11:58 AM
To: <keepermaya@delawareriverkeeper.org>
Cc: <dm@delawareriverkeeper.org>
Subject: Speak Up for Mill Creek
the Delaware Riverkeeper Maya K. van Rossum
300 Pond Street
2nd Floor
Bristol, PA 19007

Dear Maya,

As a resident of the Delaware River Watershed, I am delighted to see that one of the tributaries that feeds the Schuylkill River is deserving of a stream redesignation to Exceptional Value Status.

Mill Creek in Union Township is part of the Schuylkill Highlands and a treasure for those who visit favorite places like French Creek State Park. It is surrounded by many other special protection streams and it is critical that DEP upgrades this stream now. As a resident of the Watershed that wants strong protections for our cleanest streams, I join with Delaware Riverkeeper Network as a co-petitioner to the Mill Creek upgrade petition.

Our freshwater is a precious and finite resource and Pennsylvania is facing tremendous challenges to keep our clean streams clean. This upgrade should be a first step to bringing needed protections and policies to ensure that the obligations of the Clean Water Act and anti-degradation policies are met.

Please include this letter in the Mill Creek redesignation petition to the Pennsylvania Department of Environmental Protection as we work together to protect our cleanest streams.

Emily Muller
36 Sycamore Place
Princeton, NJ, 08540

Delaware Riverkeeper Network

From: <ashschmid@gmail.com>
Date: Friday, January 14, 2011 9:07 AM
To: <keepermaya@delawariverkeeper.org>
Cc: <dm@delawariverkeeper.org>
Subject: Speak Up for Mill Creek
the Delaware Riverkeeper Maya K. van Rossum
300 Pond Street
2nd Floor
Bristol, PA 19007

Dear Maya,

As a resident of the Delaware River Watershed, I am delighted to see that one of the tributaries that feeds the Schuylkill River is deserving of a stream redesignation to Exceptional Value Status.

Mill Creek in Union Township is part of the Schuylkill Highlands and a treasure for those who visit favorite places like French Creek State Park. It is surrounded by many other special protection streams and it is critical that DEP upgrades this stream now. As a resident of the Watershed that wants strong protections for our cleanest streams, I join with Delaware Riverkeeper Network as a co-petitioner to the Mill Creek upgrade petition.

Our freshwater is a precious and finite resource and Pennsylvania is facing tremendous challenges to keep our clean streams clean. This upgrade should be a first step to bringing needed protections and policies to ensure that the obligations of the Clean Water Act and anti-degradation policies are met.

Please include this letter in the Mill Creek redesignation petition to the Pennsylvania Department of Environmental Protection as we work together to protect our cleanest streams.

Ashley Schmid
388 Blue Ridge Dr
Levittown, PA, 19057

Delaware Riverkeeper Network

From: <david@ludlum.com>
Date: Thursday, January 13, 2011 8:41 PM
To: <keepermaya@delawareriverkeeper.org>
Cc: <drn@delawareriverkeeper.org>
Subject: Speak Up for Mill Creek
the Delaware Riverkeeper Maya K. van Rossum
300 Pond Street
2nd Floor
Bristol, PA 19007

Dear Maya,

As a resident of the Delaware River Watershed, I am delighted to see that one of the tributaries that feeds the Schuylkill River is deserving of a stream redesignation to Exceptional Value Status.

Mill Creek in Union Township is part of the Schuylkill Highlands and a treasure for those who visit favorite places like French Creek State Park. It is surrounded by many other special protection streams and it is critical that DEP upgrades this stream now. As a resident of the Watershed that wants strong protections for our cleanest streams, I join with Delaware Riverkeeper Network as a co-petitioner to the Mill Creek upgrade petition.

Our freshwater is a precious and finite resource and Pennsylvania is facing tremendous challenges to keep our clean streams clean. This upgrade should be a first step to bringing needed protections and policies to ensure that the obligations of the Clean Water Act and anti-degradation policies are met.

Please include this letter in the Mill Creek redesignation petition to the Pennsylvania Department of Environmental Protection as we work together to protect our cleanest streams.

David Ludlum
229 S. Harrison Street
Princeton, 08540-5609,

Delaware Riverkeeper Network

From: <levinjl@yahoo.com>
Date: Thursday, January 13, 2011 7:53 PM
To: <keepermaya@delawariverkeeper.org>
Cc: <dm@delawariverkeeper.org>
Subject: Speak Up for Mill Creek
the Delaware Riverkeeper Maya K. van Rossum
300 Pond Street
2nd Floor
Bristol, PA 19007

Dear Maya,

As a resident of the Delaware River Watershed, I am delighted to see that one of the tributaries that feeds the Schuylkill River is deserving of a stream redesignation to Exceptional Value Status.

Mill Creek in Union Township is part of the Schuylkill Highlands and a treasure for those who visit favorite places like French Creek State Park. It is surrounded by many other special protection streams and it is critical that DEP upgrades this stream now. As a resident of the Watershed that wants strong protections for our cleanest streams, I join with Delaware Riverkeeper Network as a co-petitioner to the Mill Creek upgrade petition.

Our freshwater is a precious and finite resource and Pennsylvania is facing tremendous challenges to keep our clean streams clean. This upgrade should be a first step to bringing needed protections and policies to ensure that the obligations of the Clean Water Act and anti-degradation policies are met.

Please include this letter in the Mill Creek redesignation petition to the Pennsylvania Department of Environmental Protection as we work together to protect our cleanest streams.

Jon Levin
1899 Aster Rd.
Macungie, PA, 18062

Delaware Riverkeeper Network

From: <sellart@earthlink.net>
Date: Thursday, January 13, 2011 7:25 PM
To: <keepermaya@delawareriverkeeper.org>
Cc: <djn@delawareriverkeeper.org>
Subject: Speak Up for Mill Creek
the Delaware Riverkeeper Maya K. van Rossum
300 Pond Street
2nd Floor
Bristol, PA 19007

Dear Maya,

As a resident of the Delaware River Watershed, I am delighted to see that one of the tributaries that feeds the Schuylkill River is deserving of a stream redesignation to Exceptional Value Status.

Mill Creek in Union Township is part of the Schuylkill Highlands and a treasure for those who visit favorite places like French Creek State Park. It is surrounded by many other special protection streams and it is critical that DEP upgrades this stream now. As a resident of the Watershed that wants strong protections for our cleanest streams, I join with Delaware Riverkeeper Network as a co-petitioner to the Mill Creek upgrade petition.

Our freshwater is a precious and finite resource and Pennsylvania is facing tremendous challenges to keep our clean streams clean. This upgrade should be a first step to bringing needed protections and policies to ensure that the obligations of the Clean Water Act and anti-degradation policies are met.

Please include this letter in the Mill Creek redesignation petition to the Pennsylvania Department of Environmental Protection as we work together to protect our cleanest streams.

Mary Leitch
526 Reed st
Phila, pa, 19147

Delaware Riverkeeper Network

From: <mmk@epix.net>
Date: Thursday, January 13, 2011 7:17 PM
To: <keepermaya@delawariverkeeper.org>
Cc: <drn@delawariverkeeper.org>
Subject: Speak Up for Mill Creek
the Delaware Riverkeeper Maya K. van Rossum
300 Pond Street
2nd Floor
Bristol, PA 19007

Dear Maya,

As a resident of the Delaware River Watershed, I am delighted to see that one of the tributaries that feeds the Schuylkill River is deserving of a stream redesignation to Exceptional Value Status.

Mill Creek in Union Township is part of the Schuylkill Highlands and a treasure for those who visit favorite places like French Creek State Park. It is surrounded by many other special protection streams and it is critical that DEP upgrades this stream now. As a resident of the Watershed that wants strong protections for our cleanest streams, I join with Delaware Riverkeeper Network as a co-petitioner to the Mill Creek upgrade petition.

Our freshwater is a precious and finite resource and Pennsylvania is facing tremendous challenges to keep our clean streams clean. This upgrade should be a first step to bringing needed protections and policies to ensure that the obligations of the Clean Water Act and anti-degradation policies are met.

Please include this letter in the Mill Creek redesignation petition to the Pennsylvania Department of Environmental Protection as we work together to protect our cleanest streams.

Marion M. Kyde, PhD
The Tulgey Wood 15 Tankhannen Road
Ottsville, PA, 18942

Delaware Riverkeeper Network

From: <karenjoslin@msn.com>
Date: Thursday, January 13, 2011 5:02 PM
To: <keepermaya@delawariverkeeper.org>
Cc: <dm@delawariverkeeper.org>
Subject: Speak Up for Mill Creek
the Delaware Riverkeeper Maya K. van Rossum
300 Pond Street
2nd Floor
Bristol, PA 19007

Dear Maya,

As a resident and kayaker of the Delaware River Watershed, I am delighted to see that one of the tributaries that feeds the Schuylkill River is deserving of a stream redesignation to Exceptional Value Status. I have an intimate view of the river and am reminded every time I embark that the animals depending on the river for survival, including humans for drinking water, need careful protection.

Mill Creek in Union Township is part of the Schuylkill Highlands and a treasure for those who visit favorite places like French Creek State Park. It is surrounded by many other special protection streams and it is critical that DEP upgrades this stream now. As a resident of the Watershed that wants strong protections for our cleanest streams, I join with Delaware Riverkeeper Network as a co-petitioner to the Mill Creek upgrade petition.

Our freshwater is a precious and finite resource and Pennsylvania is facing tremendous challenges to keep our clean streams clean. This upgrade should be a first step to bringing needed protections and policies to ensure that the obligations of the Clean Water Act and anti-degradation policies are met.

Please include this letter in the Mill Creek redesignation petition to the Pennsylvania Department of Environmental Protection as we work together to protect our cleanest streams.

Karen Joslin
316 Gaskill St.
Philadelphia, PA, 19147

Delaware Riverkeeper Network

From: <toutelaglace@msn.com>
Date: Thursday, January 13, 2011 2:37 PM
To: <keepermaya@delawariverkeeper.org>
Cc: <dm@delawariverkeeper.org>
Subject: Speak Up for Mill Creek
the Delaware Riverkeeper Maya K. van Rossum
300 Pond Street
2nd Floor
Bristol, PA 19007

Dear Maya,

As a resident of the Delaware River Watershed, I am delighted to see that one of the tributaries that feeds the Schuylkill River is deserving of a stream redesignation to Exceptional Value Status.

Mill Creek in Union Township is part of the Schuylkill Highlands and a treasure for those who visit favorite places like French Creek State Park. It is surrounded by many other special protection streams and it is critical that DEP upgrades this stream now. As a resident of the Watershed that wants strong protections for our cleanest streams, I join with Delaware Riverkeeper Network as a co-petitioner to the Mill Creek upgrade petition.

Our freshwater is a precious and finite resource and Pennsylvania is facing tremendous challenges to keep our clean streams clean. This upgrade should be a first step to bringing needed protections and policies to ensure that the obligations of the Clean Water Act and anti-degradation policies are met.

Please include this letter in the Mill Creek redesignation petition to the Pennsylvania Department of Environmental Protection as we work together to protect our cleanest streams.

Laura Mondon
941 Glenbrook Ave. Bryn Mawr
Bryn Mawr, PA, 19010

Delaware Riverkeeper Network

From: <liskala@co.bucks.pa.us>
Date: Thursday, January 13, 2011 12:37 PM
To: <keepermaya@delawareriverkeeper.org>
Cc: <drn@delawareriverkeeper.org>
Subject: Speak Up for Mill Creek
the Delaware Riverkeeper Maya K. van Rossum
300 Pond Street
2nd Floor
Bristol, PA 19007

Dear Maya,

As a resident of the Delaware River Watershed, I am delighted to see that one of the tributaries that feeds the Schuylkill River is deserving of a stream redesignation to Exceptional Value Status.

Mill Creek in Union Township is part of the Schuylkill Highlands and a treasure for those who visit favorite places like French Creek State Park. It is surrounded by many other special protection streams and it is critical that DEP upgrades this stream now. As a resident of the Watershed that wants strong protections for our cleanest streams, I join with Delaware Riverkeeper Network as a co-petitioner to the Mill Creek upgrade petition.

Our freshwater is a precious and finite resource and Pennsylvania is facing tremendous challenges to keep our clean streams clean. This upgrade should be a first step to bringing needed protections and policies to ensure that the obligations of the Clean Water Act and anti-degradation policies are met.

Please include this letter in the Mill Creek redesignation petition to the Pennsylvania Department of Environmental Protection as we work together to protect our cleanest streams.

As a leader of group hikes, I would like to say that French Creek State Park is one of our favorite locations. Please protect this stream.

Lorraine Skala
6219 Crescent Avenue
Bensalem, PA, 19020

Delaware Riverkeeper Network

From: <Ericsb274@netzero.net>
Date: Thursday, January 13, 2011 11:36 AM
To: <keepermaya@delawareriverkeeper.org>
Cc: <drn@delawareriverkeeper.org>
Subject: Speak Up for Mill Creek
the Delaware Riverkeeper Maya K. van Rossum
300 Pond Street
2nd Floor
Bristol, PA 19007

Dear Maya,

As a resident of the Delaware River Watershed, I am delighted to see that one of the tributaries that feeds the Schuylkill River is deserving of a stream re-designation to Exceptional Value Status.

Mill Creek in Union Township is part of the Schuylkill Highlands and a treasure for those who visit favorite places like French Creek State Park. It is surrounded by many other special protection streams and it is critical that DEP upgrades this stream now. As a resident of the Watershed that wants strong protections for our cleanest streams, I join with Delaware Riverkeeper Network as a co-petitioner to the Mill Creek upgrade petition.

Our freshwater is a precious and finite resource and Pennsylvania is facing tremendous challenges to keep our clean streams clean. This upgrade should be a first step to bringing needed protections and policies to ensure that the obligations of the Clean Water Act and anti-degradation policies are met.

Please include this letter in the Mill Creek re-designation petition to the Pennsylvania Department of Environmental Protection as we work together to protect our cleanest streams.

Eric Boyce
P.O. Box 274
Hatboro, PA, 19040-0274

Delaware Riverkeeper Network

From: <mrobbins@navenewell.net>
Date: Thursday, January 13, 2011 11:25 AM
To: <keepennaya@delawariverkeeper.org>
Cc: <dm@delawariverkeeper.org>
Subject: Speak Up for Mill Creek
the Delaware Riverkeeper Maya K. van Rossum
300 Pond Street
2nd Floor
Bristol, PA 19007

Dear Maya,

As a resident of the Delaware River Watershed, I am delighted to see that one of the tributaries that feeds the Schuylkill River is deserving of a stream redesignation to Exceptional Value Status.

Mill Creek in Union Township is part of the Schuylkill Highlands and a treasure for those who visit favorite places like French Creek State Park. It is surrounded by many other special protection streams and it is critical that DEP upgrades this stream now. As a resident of the Watershed that wants strong protections for our cleanest streams, I join with Delaware Riverkeeper Network as a co-petitioner to the Mill Creek upgrade petition.

Our freshwater is a precious and finite resource and Pennsylvania is facing tremendous challenges to keep our clean streams clean. This upgrade should be a first step to bringing needed protections and policies to ensure that the obligations of the Clean Water Act and anti-degradation policies are met.

Please include this letter in the Mill Creek redesignation petition to the Pennsylvania Department of Environmental Protection as we work together to protect our cleanest streams.

Megan Robbins
1710B Ralston Dr
Mount Laurel, nj, 08054

Delaware Riverkeeper Network

From: <Inhill1770@verizon.net>
Date: Thursday, January 13, 2011 10:48 AM
To: <keepermaya@delawareriverkeeper.org>
Cc: <dm@delawareriverkeeper.org>
Subject: Speak Up for Mill Creek
the Delaware Riverkeeper Maya K. van Rossum
300 Pond Street
2nd Floor
Bristol, PA 19007

Dear Maya,

My husband and I have done field analysis of a local stream for Milford Township. the quality and preservation of our watershed is near and adear to our hearts So, as a resident of the Delaware River Watershed, I am delighted to see that one of the tributaries that feeds the Schuylkill River is deserving of a stream redesignation to Exceptional Value Status.

Mill Creek in Union Township is part of the Schuylkill Highlands and a treasure for those who visit favorite places like French Creek State Park - which we do several times a year. It is surrounded by many other special protection streams and it is CRITICAL that DEP upgrades this stream now. As a resident of the Watershed that wants strong protections for our cleanest streams, I ENTHUSIASTICALLY join with Delaware River keeper Network as a co-petitioner to the Mill Creek upgrade petition.

Our freshwater is a precious and finite resource and Pennsylvania is facing tremendous challenges to keep our clean streams clean. This upgrade should be a first step to bringing needed protections and policies to ensure that the obligations of the Clean Water Act and anti-degradation policies are met.

Please include this letter in the Mill Creek redesignation petition to the Pennsylvania Department of Environmental Protection as we work together to protect our cleanest streams.

Janet I. hill
1770 Old Plains Rd.
Pennsburg, Pa, 18073

Delaware Riverkeeper Network

From: <jan@tyniec.com>
Date: Thursday, January 13, 2011 10:20 AM
To: <keepermaya@delawareriverkeeper.org>
Cc: <dm@delawareriverkeeper.org>
Subject: Speak Up for Mill Creek
the Delaware Riverkeeper Maya K. van Rossum
300 Pond Street
2nd Floor
Bristol, PA 19007

Dear Maya,

As a resident of the Delaware River Watershed, I am delighted to see that one of the tributaries that feeds the Schuylkill River is deserving of a stream redesignation to Exceptional Value Status.

Mill Creek in Union Township is part of the Schuylkill Highlands and a treasure for those who visit favorite places like French Creek State Park. It is surrounded by many other special protection streams and it is critical that DEP upgrades this stream now. As a resident of the Watershed that wants strong protections for our cleanest streams, I join with Delaware Riverkeeper Network as a co-petitioner to the Mill Creek upgrade petition.

Our freshwater is a precious and finite resource and Pennsylvania is facing tremendous challenges to keep our clean streams clean. This upgrade should be a first step to bringing needed protections and policies to ensure that the obligations of the Clean Water Act and anti-degradation policies are met.

Please include this letter in the Mill Creek redesignation petition to the Pennsylvania Department of Environmental Protection as we work together to protect our cleanest streams.

Jan Tyniec
100 Gelderman Road
Hawley, 18428,

Delaware Riverkeeper Network

From: <bryandelmonte@comcast.net>
Date: Thursday, January 13, 2011 10:08 AM
To: <keepermaya@delawareriverkeeper.org>
Cc: <dm@delawareriverkeeper.org>
Subject: Speak Up for Mill Creek
the Delaware Riverkeeper Maya K. van Rossum
300 Pond Street
2nd Floor
Bristol, PA 19007

Dear Maya,

As a resident of Chester County in the Delaware River Watershed, I am delighted to see that one of the tributaries that feeds the Schuylkill River is deserving of a stream redesignation to Exceptional Value Status.

Mill Creek in Union Township is part of the Schuylkill Highlands and a treasure for those who visit favorite places like French Creek State Park. It is surrounded by many other special protection streams and it is critical that DEP upgrades this stream now. As a resident of Chester County in this Watershed that wants strong protections for our cleanest streams, I join with Delaware Riverkeeper Network as a co-petitioner to the Mill Creek upgrade petition.

Our freshwater is a precious and finite resource and Pennsylvania is facing tremendous challenges to keep our clean streams clean. This upgrade should be a first step to bringing needed protections and policies to ensure that the obligations of the Clean Water Act and anti-degradation policies are met.

Please include this letter in the Mill Creek redesignation petition to the Pennsylvania Department of Environmental Protection as we work together to protect our cleanest streams .

Bryan Del Monte
1710 Clock Tower Drive
West Chester, 19380,

Delaware Riverkeeper Network

From: <sbrules@hotmail.com>
Date: Thursday, January 13, 2011 9:54 AM
To: <keepermaya@delawariverkeeper.org>
Cc: <drn@delawariverkeeper.org>
Subject: Speak Up for Mill Creek
the Delaware Riverkeeper Maya K. van Rossum
300 Pond Street
2nd Floor
Bristol, PA 19007

Dear Maya,

As a resident of the Delaware River Watershed, I am delighted to see that one of the tributaries that feeds the Schuylkill River is deserving of a stream redesignation to Exceptional Value Status.

Mill Creek in Union Township is part of the Schuylkill Highlands and a treasure for those who visit favorite places like French Creek State Park. It is surrounded by many other special protection streams and it is critical that DEP upgrades this stream now. As a resident of the Watershed that wants strong protections for our cleanest streams, I join with Delaware Riverkeeper Network as a co-petitioner to the Mill Creek upgrade petition.

Our freshwater is a precious and finite resource and Pennsylvania is facing tremendous challenges to keep our clean streams clean. This upgrade should be a first step to bringing needed protections and policies to ensure that the obligations of the Clean Water Act and anti-degradation policies are met.

Please include this letter in the Mill Creek redesignation petition to the Pennsylvania Department of Environmental Protection as we work together to protect our cleanest streams.

Jason Kemple
28 Homestead Farm Rd
Milford, NJ, 08848

Delaware Riverkeeper Network

From: <bsalantri@hotmail.com>
Date: Thursday, January 13, 2011 9:14 AM
To: <keepermaya@delawareriverkeeper.org>
Cc: <dm@delawareriverkeeper.org>
Subject: Speak Up for Mill Creek
the Delaware Riverkeeper Maya K. van Rossum
300 Pond Street
2nd Floor
Bristol, PA 19007

Dear Maya,

As a resident of the Delaware River Watershed, I am delighted to see that one of the tributaries that feeds the Schuylkill River is deserving of a stream redesignation to Exceptional Value Status.

Mill Creek in Union Township is part of the Schuylkill Highlands and a treasure for those who visit favorite places like French Creek State Park. It is surrounded by many other special protection streams and it is critical that DEP upgrades this stream now. As a resident of the Watershed that wants strong protections for our cleanest streams, I join with Delaware Riverkeeper Network as a co-petitioner to the Mill Creek upgrade petition.

Our freshwater is a precious and finite resource and Pennsylvania is facing tremendous challenges to keep our clean streams clean. This upgrade should be a first step to bringing needed protections and policies to ensure that the obligations of the Clean Water Act and anti-degradation policies are met.

Please include this letter in the Mill Creek redesignation petition to the Pennsylvania Department of Environmental Protection as we work together to protect our cleanest streams.

Bridget Salantri
101 Pebble Woods Drive
Doylestown, PA, 18901

Delaware Riverkeeper Network

From: <nancyrone@comcast.net>
Date: Thursday, January 13, 2011 9:14 AM
To: <keepermaya@delawariverkeeper.org>
Cc: <drn@delawariverkeeper.org>
Subject: Speak Up for Mill Creek
the Delaware Riverkeeper Maya K. van Rossum
300 Pond Street
2nd Floor
Bristol, PA 19007

Dear Maya,

As a resident of South Jersey, what is done by Pennsylvania that impacts the water in the Delaware effects all in New Jersey that live on its western side.

Mill Creek in Union Township is part of the Schuylkill Highlands and a treasure for those who visit favorite places like French Creek State Park. It is surrounded by many other special protection streams and it is critical that DEP upgrades this stream now. As a resident of the Watershed that wants strong protections for our cleanest streams, I join with Delaware Riverkeeper Network as a co-petitioner to the Mill Creek upgrade petition.

Our freshwater is a precious and finite resource and Pennsylvania is facing tremendous challenges to keep our clean streams clean. This upgrade should be a first step to bringing needed protections and policies to ensure that the obligations of the Clean Water Act and anti-degradation policies are met.

Please include this letter in the Mill Creek redesignation petition to the Pennsylvania Department of Environmental Protection as we work together to protect our cleanest streams.

Nancy Rone
429 Inverness Road
Williamstown, NJ, 08094

Delaware Riverkeeper Network

From: <justfloat811@yahoo.com>
Date: Thursday, January 13, 2011 8:59 AM
To: <keepermaya@delawareriverkeeper.org>
Cc: <drn@delawareriverkeeper.org>
Subject: Speak Up for Mill Creek
the Delaware Riverkeeper Maya K. van Rossum
300 Pond Street
2nd Floor
Bristol, PA 19007

Dear Maya,

As a resident of the Delaware River Watershed, I am delighted to see that one of the tributaries that feeds the Schuylkill River is deserving of a stream redesignation to Exceptional Value Status.

Mill Creek in Union Township is part of the Schuylkill Highlands and a treasure for those who visit favorite places like French Creek State Park. It is surrounded by many other special protection streams and it is critical that DEP upgrades this stream now. As a resident of the Watershed that wants strong protections for our cleanest streams, I join with Delaware Riverkeeper Network as a co-petitioner to the Mill Creek upgrade petition.

Our freshwater is a precious and finite resource and Pennsylvania is facing tremendous challenges to keep our clean streams clean. This upgrade should be a first step to bringing needed protections and policies to ensure that the obligations of the Clean Water Act and anti-degradation policies are met.

Please include this letter in the Mill Creek redesignation petition to the Pennsylvania Department of Environmental Protection as we work together to protect our cleanest streams.

Christine King
629 Arbor Rd
Cheltenham, PA, 19012

Delaware Riverkeeper Network

From: <cclst@comcast.net>
Date: Thursday, January 13, 2011 8:45 AM
To: <keepermaya@delawariverkeeper.org>
Cc: <dm@delawariverkeeper.org>
Subject: Speak Up for Mill Creek
the Delaware Riverkeeper Maya K. van Rossum
300 Pond Street
2nd Floor
Bristol, PA 19007

Dear Maya,

As a resident of the Delaware River Watershed, I am delighted to see that one of the tributaries that feeds the Schuylkill River is deserving of a stream redesignation to Exceptional Value Status.

Mill Creek in Union Township is part of the Schuylkill Highlands and a treasure for those who visit favorite places like French Creek State Park. It is surrounded by many other special protection streams and it is critical that DEP upgrades this stream now. As a resident of the Watershed that wants strong protections for our cleanest streams, I join with Delaware Riverkeeper Network as a co-petitioner to the Mill Creek upgrade petition.

Our freshwater is a precious and finite resource and Pennsylvania is facing tremendous challenges to keep our clean streams clean. This upgrade should be a first step to bringing needed protections and policies to ensure that the obligations of the Clean Water Act and anti-degradation policies are met.

Please include this letter in the Mill Creek redesignation petition to the Pennsylvania Department of Environmental Protection as we work together to protect our cleanest streams.

Charles Furst
po 221
solebury, pa, 18963

Delaware Riverkeeper Network

From: <gdtrfb@ccil.org>
Date: Thursday, January 13, 2011 8:18 AM
To: <keepermaya@delawariverkeeper.org>
Cc: <dm@delawariverkeeper.org>
Subject: Speak Up for Mill Creek
the Delaware Riverkeeper Maya K. van Rossum
300 Pond Street
2nd Floor
Bristol, PA 19007

Dear Maya,

As a resident of the Delaware River Watershed, I am delighted to see that one of the tributaries that feeds the Schuylkill River is deserving of a stream redesignation to Exceptional Value Status.

Mill Creek in Union Township is part of the Schuylkill Highlands and a treasure for those who visit favorite places like French Creek State Park. It is surrounded by many other special protection streams and it is critical that DEP upgrades this stream now. As a resident of the Watershed that wants strong protections for our cleanest streams, I join with Delaware Riverkeeper Network as a co-petitioner to the Mill Creek upgrade petition.

Our freshwater is a precious and finite resource and Pennsylvania is facing tremendous challenges to keep our clean streams clean. This upgrade should be a first step to bringing needed protections and policies to ensure that the obligations of the Clean Water Act and anti-degradation policies are met.

Please include this letter in the Mill Creek redesignation petition to the Pennsylvania Department of Environmental Protection as we work together to protect our cleanest streams.

Hunter King
609 S. High St. Apartment G
West Chester, PA, 19382

Delaware Riverkeeper Network

From: <jeanne2356@gmail.com>
Date: Thursday, January 13, 2011 7:58 AM
To: <keepermaya@delawareriverkeeper.org>
Cc: <drn@delawareriverkeeper.org>
Subject: Speak Up for Mill Creek
the Delaware Riverkeeper Maya K. van Rossum
300 Pond Street
2nd Floor
Bristol, PA 19007

Dear Maya,

As a resident of the Delaware River Watershed, I am delighted to see that one of the tributaries that feeds the Schuylkill River is deserving of a stream redesignation to Exceptional Value Status.

Mill Creek in Union Township is part of the Schuylkill Highlands and a treasure for those who visit favorite places like French Creek State Park. It is surrounded by many other special protection streams and it is critical that DEP upgrades this stream now. As a resident of the Watershed that wants strong protections for our cleanest streams, I join with Delaware Riverkeeper Network as a co-petitioner to the Mill Creek upgrade petition.

Our freshwater is a precious and finite resource and Pennsylvania is facing tremendous challenges to keep our clean streams clean. This upgrade should be a first step to bringing needed protections and policies to ensure that the obligations of the Clean Water Act and anti-degradation policies are met.

Please include this letter in the Mill Creek redesignation petition to the Pennsylvania Department of Environmental Protection as we work together to protect our cleanest streams.

Jeanne King
330 McIntosh Road
West Chester, PA, 19382

Delaware Riverkeeper Network

From: <squirrelbuddy@aol.com>
Date: Thursday, January 13, 2011 7:17 AM
To: <keepermaya@delawareriverkeeper.org>
Cc: <dm@delawareriverkeeper.org>
Subject: Speak Up for Mill Creek
the Delaware Riverkeeper Maya K. van Rossum
300 Pond Street
2nd Floor
Bristol, PA 19007

Dear Maya,

As a resident of the Delaware River Watershed, I am delighted to see that one of the tributaries that feeds the Schuylkill River is deserving of a stream redesignation to Exceptional Value Status.

Mill Creek in Union Township is part of the Schuylkill Highlands and a treasure for those who visit favorite places like French Creek State Park. It is surrounded by many other special protection streams and it is critical that DEP upgrades this stream now. As a resident of the Watershed that wants strong protections for our cleanest streams, I join with Delaware Riverkeeper Network as a co-petitioner to the Mill Creek upgrade petition.

Our freshwater is a precious and finite resource and Pennsylvania is facing tremendous challenges to keep our clean streams clean. This upgrade should be a first step to bringing needed protections and policies to ensure that the obligations of the Clean Water Act and anti-degradation policies are met.

Please include this letter in the Mill Creek redesignation petition to the Pennsylvania Department of Environmental Protection as we work together to protect our cleanest streams.

Janet Cavallo
1276 Providence Rd
Secane, PA, 19018

Delaware Riverkeeper Network

From: <davidschogel@yahoo.com>
Date: Thursday, January 13, 2011 1:00 AM
To: <keepermaya@delawariverkeeper.org>
Cc: <drn@delawariverkeeper.org>
Subject: Speak Up for Mill Creek
the Delaware Riverkeeper Maya K. van Rossum
300 Pond Street
2nd Floor
Bristol, PA 19007

Dear Maya,

As a resident of the Delaware River Watershed, I am delighted to see that one of the tributaries that feeds the Schuylkill River is deserving of a stream redesignation to Exceptional Value Status.

Mill Creek in Union Township is part of the Schuylkill Highlands and a treasure for those who visit favorite places like French Creek State Park. It is surrounded by many other special protection streams and it is critical that DEP upgrades this stream now. As a resident of the Watershed that wants strong protections for our cleanest streams, I join with Delaware Riverkeeper Network as a co-petitioner to the Mill Creek upgrade petition.

Our freshwater is a precious and finite resource and Pennsylvania is facing tremendous challenges to keep our clean streams clean. This upgrade should be a first step to bringing needed protections and policies to ensure that the obligations of the Clean Water Act and anti-degradation policies are met.

Please include this letter in the Mill Creek redesignation petition to the Pennsylvania Department of Environmental Protection as we work together to protect our cleanest streams.

David Schogel
402 W Manheim Street
Philadelphia, PA, 19144-4123

Delaware Riverkeeper Network

From: <photofrank@comcast.net>
Date: Wednesday, January 12, 2011 11:56 PM
To: <keepermaya@delawariverkeeper.org>
Cc: <dm@delawariverkeeper.org>
Subject: Speak Up for Mill Creek
the Delaware Riverkeeper Maya K. van Rossum
300 Pond Street
2nd Floor
Bristol, PA 19007

Dear Maya,

As a resident of the Delaware River Watershed, I am delighted to see that one of the tributaries that feeds the Schuylkill River is deserving of a stream redesignation to Exceptional Value Status.

Mill Creek in Union Township is part of the Schuylkill Highlands and a treasure for those who visit favorite places like French Creek State Park. It is surrounded by many other special protection streams and it is critical that DEP upgrades this stream now. As a resident of the Watershed that wants strong protections for our cleanest streams, I join with Delaware Riverkeeper Network as a co-petitioner to the Mill Creek upgrade petition.

Our freshwater is a precious and finite resource and Pennsylvania is facing tremendous challenges to keep our clean streams clean. This upgrade should be a first step to bringing needed protections and policies to ensure that the obligations of the Clean Water Act and anti-degradation policies are met.

Please include this letter in the Mill Creek redesignation petition to the Pennsylvania Department of Environmental Protection as we work together to protect our cleanest streams.

Frank Miles
3324 Garnet Mine Rd.
Garnet Valley, Pa, 19060

Delaware Riverkeeper Network

From: <johnmcveigh123@yahoo.com>
Date: Wednesday, January 12, 2011 11:10 PM
To: <keepennaya@delawareriverkeeper.org>
Cc: <drn@delawareriverkeeper.org>
Subject: Speak Up for Mill Creek
the Delaware Riverkeeper Maya K. van Rossum
300 Pond Street
2nd Floor
Bristol, PA 19007

Dear Maya,

As a resident of the Delaware River Watershed, I am delighted to see that one of the tributaries that feeds the Schuylkill River is deserving of a stream redesignation to Exceptional Value Status.

Mill Creek in Union Township is part of the Schuylkill Highlands and a treasure for those who visit favorite places like French Creek State Park. It is surrounded by many other special protection streams and it is critical that DEP upgrades this stream now. As a resident of the Watershed that wants strong protections for our cleanest streams, I join with Delaware Riverkeeper Network as a co-petitioner to the Mill Creek upgrade petition.

Our freshwater is a precious and finite resource and Pennsylvania is facing tremendous challenges to keep our clean streams clean. This upgrade should be a first step to bringing needed protections and policies to ensure that the obligations of the Clean Water Act and anti-degradation policies are met.

Please include this letter in the Mill Creek redesignation petition to the Pennsylvania Department of Environmental Protection as we work together to protect our cleanest streams.

John Mcveigh
po box 127
UPPER BLACK EDDY, 18972,

Delaware Riverkeeper Network

From: <cardle08@unity.edu>
Date: Wednesday, January 12, 2011 9:46 PM
To: <keepermaya@delawareriverkeeper.org>
Cc: <dm@delawareriverkeeper.org>
Subject: Speak Up for Mill Creek
the Delaware Riverkeeper Maya K. van Rossum
300 Pond Street
2nd Floor
Bristol, PA 19007

Dear Maya,

As a resident of the Delaware River Watershed, I am delighted to see that one of the tributaries that feeds the Schuylkill River is deserving of a stream redesignation to Exceptional Value Status.

Mill Creek in Union Township is part of the Schuylkill Highlands and a treasure for those who visit favorite places like French Creek State Park. It is surrounded by many other special protection streams and it is critical that DEP upgrades this stream now. As a resident of the Watershed that wants strong protections for our cleanest streams, I join with Delaware Riverkeeper Network as a co-petitioner to the Mill Creek upgrade petition.

Our freshwater is a precious and finite resource and Pennsylvania is facing tremendous challenges to keep our clean streams clean. This upgrade should be a first step to bringing needed protections and policies to ensure that the obligations of the Clean Water Act and anti-degradation policies are met.

Please include this letter in the Mill Creek redesignation petition to the Pennsylvania Department of Environmental Protection as we work together to protect our cleanest streams.

Chelsea Ardle
7584 Seemsville Rd.
Northampton, PA, 18067

Delaware Riverkeeper Network

From: <cgmarshall@nni.com>
Date: Wednesday, January 12, 2011 9:32 PM
To: <keepermaya@delawariverkeeper.org>
Cc: <dm@delawariverkeeper.org>
Subject: Speak Up for Mill Creek
the Delaware Riverkeeper Maya K. van Rossum
300 Pond Street
2nd Floor
Bristol, PA 19007

Dear Maya,

As a resident of the Delaware River Watershed, I am delighted to see that one of the tributaries that feeds the Schuylkill River is deserving of a stream redesignation to Exceptional Value Status.

Mill Creek in Union Township is part of the Schuylkill Highlands and a treasure for those who visit favorite places like French Creek State Park. It is surrounded by many other special protection streams and it is critical that DEP upgrades this stream now. As a resident of the Watershed that wants strong protections for our cleanest streams, I join with Delaware Riverkeeper Network as a co-petitioner to the Mill Creek upgrade petition.

Our freshwater is a precious and finite resource and Pennsylvania is facing tremendous challenges to keep our clean streams clean. This upgrade should be a first step to bringing needed protections and policies to ensure that the obligations of the Clean Water Act and anti-degradation policies are met.

Please include this letter in the Mill Creek redesignation petition to the Pennsylvania Department of Environmental Protection as we work together to protect our cleanest streams.

Chuck Marshall
32 Wistar Road
Paoli, PA, 19301

Delaware Riverkeeper Network

From: <cadzubak@gmail.com>
Date: Wednesday, January 12, 2011 9:18 PM
To: <keepermaya@delawareriverkeeper.org>
Cc: <dm@delawareriverkeeper.org>
Subject: Speak Up for Mill Creek
the Delaware Riverkeeper Maya K. van Rossum
300 Pond Street
2nd Floor
Bristol, PA 19007

Dear Maya,

As a resident of the Delaware River Watershed, I am delighted to see that one of the tributaries that feeds the Schuylkill River is deserving of a stream redesignation to Exceptional Value Status.

Mill Creek in Union Township is part of the Schuylkill Highlands and a treasure for those who visit favorite places like French Creek State Park. It is surrounded by many other special protection streams and it is critical that DEP upgrades this stream now. As a resident of the Watershed that wants strong protections for our cleanest streams, I join with Delaware Riverkeeper Network as a co-petitioner to the Mill Creek upgrade petition.

Our freshwater is a precious and finite resource and Pennsylvania is facing tremendous challenges to keep our clean streams clean. This upgrade should be a first step to bringing needed protections and policies to ensure that the obligations of the Clean Water Act and anti-degradation policies are met.

Please include this letter in the Mill Creek redesignation petition to the Pennsylvania Department of Environmental Protection as we work together to protect our cleanest streams.

Cheryl Dzubak
69 Elton Avenue
Yardville, NJ, 08620

Delaware Riverkeeper Network

From: <ppray@verizon.net>
Date: Wednesday, January 12, 2011 8:53 PM
To: <keepermaya@delawariverkeeper.org>
Cc: <drn@delawariverkeeper.org>
Subject: Speak Up for Mill Creek
the Delaware Riverkeeper Maya K. van Rossum
300 Pond Street
2nd Floor
Bristol, PA 19007

Dear Maya,

As a resident of the Delaware River Watershed, I am delighted to see that one of the tributaries that feeds the Schuylkill River is deserving of a stream redesignation to Exceptional Value Status.

Mill Creek in Union Township is part of the Schuylkill Highlands and a treasure for those who visit favorite places like French Creek State Park. It is surrounded by many other special protection streams and it is critical that DEP upgrades this stream now. As a resident of the Watershed that wants strong protections for our cleanest streams, I join with Delaware Riverkeeper Network as a co-petitioner to the Mill Creek upgrade petition.

Our freshwater is a precious and finite resource and Pennsylvania is facing tremendous challenges to keep our clean streams clean. This upgrade should be a first step to bringing needed protections and policies to ensure that the obligations of the Clean Water Act and anti-degradation policies are met.

Please include this letter in the Mill Creek redesignation petition to the Pennsylvania Department of Environmental Protection as we work together to protect our cleanest streams.

Peter Pray
223 Harvard Ave
Collingswood, NJ, 08108

1/17/2011

Delaware Riverkeeper Network

From: <redquill@ptd.net>
Date: Wednesday, January 12, 2011 8:48 PM
To: <keepermaya@delawariverkeeper.org>
Cc: <din@delawariverkeeper.org>
Subject: Speak Up for Mill Creek
the Delaware Riverkeeper Maya K. van Rossum
300 Pond Street
2nd Floor
Bristol, PA 19007

Dear Maya,

As a resident of the Delaware River Watershed, I am delighted to see that one of the tributaries that feeds the Schuylkill River is deserving of a stream redesignation to Exceptional Value Status.

Mill Creek in Union Township is part of the Schuylkill Highlands and a treasure for those who visit favorite places like French Creek State Park. It is surrounded by many other special protection streams and it is critical that DEP upgrades this stream now. As a resident of the Watershed that wants strong protections for our cleanest streams, I join with Delaware Riverkeeper Network as a co-petitioner to the Mill Creek upgrade petition.

Our freshwater is a precious and finite resource and Pennsylvania is facing tremendous challenges to keep our clean streams clean. This upgrade should be a first step to bringing needed protections and policies to ensure that the obligations of the Clean Water Act and anti-degradation policies are met.

Please include this letter in the Mill Creek redesignation petition to the Pennsylvania Department of Environmental Protection as we work together to protect our cleanest streams.

Robert F. Cericola
2849 Donegal Dr.
Macungie, PA, 18062

Delaware Riverkeeper Network

From: <jtague31@yahoo.com>
Date: Wednesday, January 12, 2011 8:40 PM
To: <keepermaya@delawareriverkeeper.org>
Cc: <dm@delawareriverkeeper.org>
Subject: Speak Up for Mill Creek
the Delaware Riverkeeper Maya K. van Rossum
300 Pond Street
2nd Floor
Bristol, PA 19007

Dear Maya,

As a resident of the Delaware River Watershed, I am delighted to see that one of the tributaries that feeds the Schuylkill River is deserving of a stream redesignation to Exceptional Value Status.

Mill Creek in Union Township is part of the Schuylkill Highlands and a treasure for those who visit favorite places like French Creek State Park. It is surrounded by many other special protection streams and it is critical that DEP upgrades this stream now. As a resident of the Watershed that wants strong protections for our cleanest streams, I join with Delaware Riverkeeper Network as a co-petitioner to the Mill Creek upgrade petition.

Our freshwater is a precious and finite resource and Pennsylvania is facing tremendous challenges to keep our clean streams clean. This upgrade should be a first step to bringing needed protections and policies to ensure that the obligations of the Clean Water Act and anti-degradation policies are met.

Please include this letter in the Mill Creek redesignation petition to the Pennsylvania Department of Environmental Protection as we work together to protect our cleanest streams.

Gerald Tague
9 Marion Road E.
Princeton, NJ, 08540

Delaware Riverkeeper Network

From: <toksook@aol.com>
Date: Wednesday, January 12, 2011 8:35 PM
To: <keepermaya@delawareriverkeeper.org>
Cc: <dm@delawareriverkeeper.org>
Subject: Speak Up for Mill Creek
the Delaware Riverkeeper Maya K. van Rossum
300 Pond Street
2nd Floor
Bristol, PA 19007

Dear Maya,

As a resident of the Delaware River Watershed, I am delighted to see that one of the tributaries that feeds the Schuylkill River is deserving of a stream redesignation to Exceptional Value Status.

Mill Creek in Union Township is part of the Schuylkill Highlands and a treasure for those who visit favorite places like French Creek State Park. It is surrounded by many other special protection streams and it is critical that DEP upgrades this stream now. As a resident of the Watershed that wants strong protections for our cleanest streams, I join with Delaware Riverkeeper Network as a co-petitioner to the Mill Creek upgrade petition.

Our freshwater is a precious and finite resource and Pennsylvania is facing tremendous challenges to keep our clean streams clean. This upgrade should be a first step to bringing needed protections and policies to ensure that the obligations of the Clean Water Act and anti-degradation policies are met.

Please include this letter in the Mill Creek redesignation petition to the Pennsylvania Department of Environmental Protection as we work together to protect our cleanest streams.

Eric Ascalon, Esq.
1009 Owl Pl
Cherry Hill, NJ, 08003

Delaware Riverkeeper Network

From: <zylchskyfarm@earthlink.net>
Date: Wednesday, January 12, 2011 8:28 PM
To: <keepermaya@delawareriverkeeper.org>
Cc: <dm@delawareriverkeeper.org>
Subject: Speak Up for Mill Creek
the Delaware Riverkeeper Maya K. van Rossum
300 Pond Street
2nd Floor
Bristol, PA 19007

Dear Maya,

As a homeowner in the Delaware River Watershed, I am delighted to see that one of the tributaries that feeds the Schuylkill River is deserving of a stream redesignation to Exceptional Value Status.

Mill Creek in Union Township is part of the Schuylkill Highlands and a treasure for those who visit favorite places like French Creek State Park. It is surrounded by many other special protection streams and it is critical that DEP upgrades this stream now. As a resident of the Watershed that wants strong protections for our cleanest streams, I join with Delaware Riverkeeper Network as a co-petitioner to the Mill Creek upgrade petition.

Our freshwater is a precious and finite resource and Pennsylvania is facing tremendous challenges to keep our clean streams clean. This upgrade should be a first step to bringing needed protections and policies to ensure that the obligations of the Clean Water Act and anti-degradation policies are met.

Please include this letter in the Mill Creek redesignation petition to the Pennsylvania Department of Environmental Protection as we work together to protect our cleanest streams.

Gerry Pearlberg
418 Bergen Street
Brooklyn, NY, 11217

Delaware Riverkeeper Network

From: <reikiferret@verizon.net>
Date: Thursday, January 13, 2011 11:59 AM
To: <drn@delawariverkeeper.org>
Subject: The following was printed for -Speak Up for Mill Creek

Delaware Riverkeeper Network

From: melissa@impossibilities.com
Sent: Monday, February 14, 2011 11:05 AM
To: keepermaya@delawariverkeeper.org
Cc: drn@delawariverkeeper.org
Subject: Speak Up for Mill Creek

the Delaware Riverkeeper Maya K. van Rossum
300 Pond Street
2nd Floor
Bristol, PA 19007

Dear Maya,

As a resident of the Delaware River Watershed, I am delighted to see that one of the tributaries that feeds the Schuylkill River is deserving of a stream redesignation to Exceptional Value Status.

Mill Creek in Union Township is part of the Schuylkill Highlands and a treasure for those who visit favorite places like French Creek State Park. It is surrounded by many other special protection streams and it is critical that DEP upgrades this stream now. As a resident of the Watershed that wants strong protections for our cleanest streams, I join with Delaware Riverkeeper Network as a co-petitioner to the Mill Creek upgrade petition.

Our freshwater is a precious and finite resource and Pennsylvania is facing tremendous challenges to keep our clean streams clean. This upgrade should be a first step to bringing needed protections and policies to ensure that the obligations of the Clean Water Act and anti-degradation policies are met.

Please include this letter in the Mill Creek redesignation petition to the Pennsylvania Department of Environmental Protection as we work together to protect our cleanest streams.

Melissa Hall
1566 Chalk Avenue
Blue Bell, PA, 19422

Delaware Riverkeeper Network

From: alex.milone@hotmail.com
Sent: Sunday, February 13, 2011 8:19 PM
To: keepermaya@delawareriverkeeper.org
Cc: drn@delawareriverkeeper.org
Subject: Speak Up for Mill Creek

the Delaware Riverkeeper Maya K. van Rossum
300 Pond Street
2nd Floor
Bristol, PA 19007

Dear Maya,

As a resident of the Delaware River Watershed, I am delighted to see that one of the tributaries that feeds the Schuylkill River is deserving of a stream re-designation to Exceptional Value Status.

Mill Creek in Union Township is part of the Schuylkill Highlands and a treasure for those who visit favorite places like French Creek State Park. It is surrounded by many other special protection streams and it is critical that DEP upgrades this stream now. As a resident of the Watershed that wants strong protections for our cleanest streams, I join with Delaware Riverkeeper Network as a co-petitioner to the Mill Creek upgrade petition.

Our freshwater is a precious and finite resource and Pennsylvania is facing tremendous challenges to keep our clean streams clean. Th is upgrade should be a first step to bringing needed protections and policies to ensure that the obligations of the Clean Water Act and anti-degradation policies are met.

Please include this letter in the Mill Creek redesignation petition to the Pennsylvania Department of Environmental Protection as we work together to protect our cleanest streams.

Alexander Milone
600 Creekside Lane
Wallingford, PA, 19086

Delaware Riverkeeper Network

From: maryannleitch@hotmail.com
Sent: Friday, February 11, 2011 2:25 PM
To: keepermaya@delawariverkeeper.org
Cc: drn@delawariverkeeper.org
Subject: Speak Up for Mill Creek

the Delaware Riverkeeper Maya K. van Rossum
300 Pond Street
2nd Floor
Bristol, PA 19007

Dear Maya,

As a resident of the Delaware River Watershed, I am delighted to see that one of the tributaries that feeds the Schuylkill River is deserving of a stream redesignation to Exceptional Value Status.

Mill Creek in Union Township is part of the Schuylkill Highlands and a treasure for those who visit favorite places like French Creek State Park. It is surrounded by many other special protection streams and it is critical that DEP upgrades this stream now. As a resident of the Watershed that wants strong protections for our cleanest streams, I join with Delaware Riverkeeper Network as a co-petitioner to the Mill Creek upgrade petition.

Our freshwater is a precious and finite resource and Pennsylvania is facing tremendous challenges to keep our clean streams clean. This upgrade should be a first step to bringing needed protections and policies to ensure that the obligations of the Clean Water Act and anti-degradation policies are met.

Please include this letter in the Mill Creek redesignation petition to the Pennsylvania Department of Environmental Protection as we work together to protect our cleanest streams.

Mary Leitch
526 Reed St
Phila, pa, 19147

Delaware Riverkeeper Network

From: liberaled@gmail.com
Sent: Wednesday, February 09, 2011 5:03 PM
To: keepermaya@delawariverkeeper.org
Cc: drn@delawariverkeeper.org
Subject: Speak Up for Mill Creek

the Delaware Riverkeeper Maya K. van Rossum
300 Pond Street
2nd Floor
Bristol, PA 19007

Dear Maya,

As a resident of the Delaware River Watershed, I am delighted to see that one of the tributaries that feeds the Schuylkill River is deserving of a stream redesignation to Exceptional Value Status.

Mill Creek in Union Township is part of the Schuylkill Highlands and a treasure for those who visit favorite places like French Creek State Park. It is surrounded by many other special protection streams and it is critical that DEP upgrades this stream now. As a resident of the Watershed that wants strong protections for our cleanest streams, I join with Delaware Riverkeeper Network as a co-petitioner to the Mill Creek upgrade petition.

Our freshwater is a precious and finite resource and Pennsylvania is facing tremendous challenges to keep our clean streams clean. This upgrade should be a first step to bringing needed protections and policies to ensure that the obligations of the Clean Water Act and anti-degradation policies are met.

Please include this letter in the Mill Creek redesignation petition to the Pennsylvania Department of Environmental Protection as we work together to protect our cleanest streams.

Edward J. Donahue III
910 Meadowbrook Dr.
Huntingdon Valley, PA, 19006

Delaware Riverkeeper Network

From: melissa@impossibilities.com
Sent: Monday, February 14, 2011 10:47 AM
To: drn@delawariverkeeper.org
Cc: tracy@delawariverkeeper.org
Subject: The following was printed for -Speak Out on Natural Gas Rules Now!

c/o Commission Secretary DRBC Commissioners
Delaware River Basin Commission
P.O. Box 7360
West Trenton, NJ 08628

Dear DRBC Commissioners,

Re: Draft Natural Gas Development Regulations

Please expand the public participation process for the draft natural gas regulations you have published. A 90 day comment period is wholly inadequate. I will be directly affected by gas drilling and the rules you adopt are crucial to my health and the health and viability of the Delaware River and its Watershed.

Further, verbal testimony is key to the input process, and three hearings will not be at all sufficient to allow sufficient input from the affected public. Public hearings should be held at geographically accessible locations to all who are interested.

- Extend the public comment period by at least 120 days
- There should be at least one public hearing in each Basin state: Delaware, New Jersey, New York, and Pennsylvania
- There should be at least one public hearing in each of the two largest population centers that rely on Delaware River water supply, New York City and Philadelphia
- Since Pennsylvania is such a large state, one Hearing should be held in the Upper Delaware region, one in the central Watershed area and one in the southeastern area.

The DRBC is at a turning point in watershed management with gas drillers knocking on our door. It is time for the DRBC to take a stand to fully protect the exceptional water quality, valued natural assets and irreplaceable drinking water supply for 15 million people by preventing pollution and avoiding degradation of the Delaware River and its outstanding Watershed from gas drilling. In order to get it right, the public needs and desires to influence that process and meaningfully participate in the decisions that will affect us and future generations, human and nonhuman.

Thank you for considering broadening the public participation process to allow for a robust public component to this landmark rulemaking.

Melissa Hall
1566 Chalk Avenue
Blue Bell, PA, 19422

Cc :Tracy Carluccio, Deputy Director

DRBC Executive Director Carol Collier
P.O. Box 7360
West Trenton, NJ 08628

Dear Director Collier:

Re: Draft Natural Gas Development Regulations

Please expand the public participation process for the draft natural gas regulations you have published. A 90 day comment period is wholly inadequate. I will be directly affected by gas drilling and the rules you adopt are crucial to my health and the health and viability of the Delaware River and its Watershed.

Further, verbal testimony is key to the input process, and three hearings will not be at all sufficient to allow sufficient input from the affected public. Public hearings should be held at geographically accessible locations to all who are interested.

- Extend the public comment period by at least 120 days
- There should be at least one public hearing in each Basin state: Delaware, New Jersey, New York, and Pennsylvania
- There should be at least one public hearing in each of the two largest population centers that rely on Delaware River water supply, New York City and Philadelphia
- Since Pennsylvania is such a large state, one Hearing should be held in the Upper Delaware region, one in the central Watershed area and one in the southeastern area.

The DRBC is at a turning point in watershed management with gas drillers knocking on our door. It is time for the DRBC to take a stand to fully protect the exceptional water quality, valued natural assets and irreplaceable drinking water supply for 15 million people by preventing pollution and avoiding degradation of the Delaware River and its outstanding Watershed from gas drilling. In order to get it right, the public needs and desires to influence that process and meaningfully participate in the decisions that will affect us and future generations, human and nonhuman.

Thank you for considering broadening the public participation process to allow for a robust public component to this landmark rulemaking.

Melissa Hall
1566 Chalk Avenue
Blue Bell, PA, 19422

Cc :Tracy Carluccio, Deputy Director

Delaware Riverkeeper Network

From: melissa@impossibilities.com
Sent: Monday, February 14, 2011 10:47 AM
To: drn@delawariverkeeper.org
Cc: tracy@delawariverkeeper.org
Subject: The following was printed for -Speak Out on Natural Gas Rules Now!

c/o Commission Secretary DRBC Commissioners
Delaware River Basin Commission
P.O. Box 7360
West Trenton, NJ 08628

Dear DRBC Commissioners,

Re: Draft Natural Gas Development Regulations

Please expand the public participation process for the draft natural gas regulations you have published. A 90 day comment period is wholly inadequate. I will be directly affected by gas drilling and the rules you adopt are crucial to my health and the health and viability of the Delaware River and its Watershed.

Further, verbal testimony is key to the input process, and three hearings will not be at all sufficient to allow sufficient input from the affected public. Public hearings should be held at geographically accessible locations to all who are interested.

- Extend the public comment period by at least 120 days
- There should be at least one public hearing in each Basin state: Delaware, New Jersey, New York, and Pennsylvania
- There should be at least one public hearing in each of the two largest population centers that rely on Delaware River water supply, New York City and Philadelphia
- Since Pennsylvania is such a large state, one Hearing should be held in the Upper Delaware region, one in the central Watershed area and one in the southeastern area.

The DRBC is at a turning point in watershed management with gas drillers knocking on our door. It is time for the DRBC to take a stand to fully protect the exceptional water quality, valued natural assets and irreplaceable drinking water supply for 15 million people by preventing pollution and avoiding degradation of the Delaware River and its outstanding Watershed from gas drilling. In order to get it right, the public needs and desires to influence that process and meaningfully participate in the decisions that will affect us and future generations, human and nonhuman.

Thank you for considering broadening the public participation process to allow for a robust public component to this landmark rulemaking.

Melissa Hall
1566 Chalk Avenue
Blue Bell, PA, 19422

Cc :Tracy Carluccio, Deputy Director

DRBC Executive Director Carol Collier
P.O. Box 7360
West Trenton, NJ 08628

Dear Director Collier:

Re: Draft Natural Gas Development Regulations

Please expand the public participation process for the draft natural gas regulations you have published. A 90 day comment period is wholly inadequate. I will be directly affected by gas drilling and the rules you adopt are crucial to my health and the health and viability of the Delaware River and its Watershed.

Further, verbal testimony is key to the input process, and three hearings will not be at all sufficient to allow sufficient input from the affected public. Public hearings should be held at geographically accessible locations to all who are interested.

- Extend the public comment period by at least 120 days
- There should be at least one public hearing in each Basin state: Delaware, New Jersey, New York, and Pennsylvania
- There should be at least one public hearing in each of the two largest population centers that rely on Delaware River water supply, New York City and Philadelphia
- Since Pennsylvania is such a large state, one Hearing should be held in the Upper Delaware region, one in the central Watershed area and one in the southeastern area.

The DRBC is at a turning point in watershed management with gas drillers knocking on our door. It is time for the DRBC to take a stand to fully protect the exceptional water quality, valued natural assets and irreplaceable drinking water supply for 15 million people by preventing pollution and avoiding degradation of the Delaware River and its outstanding Watershed from gas drilling. In order to get it right, the public needs and desires to influence that process and meaningfully participate in the decisions that will affect us and future generations, human and nonhuman.

Thank you for considering broadening the public participation process to allow for a robust public component to this landmark rulemaking.

Melissa Hall
1566 Chalk Avenue
Blue Bell, PA, 19422

Cc :Tracy Carluccio, Deputy Director

From: melissa@impossibilities.com
Sent: Monday, February 14, 2011 11:05 AM
To: keepermaya@delawariverkeeper.org
Cc: drn@delawariverkeeper.org
Subject: Speak Up for Mill Creek

the Delaware Riverkeeper Maya K. van Rossum
300 Pond Street
2nd Floor
Bristol, PA 19007

Dear Maya,

As a resident of the Delaware River Watershed, I am delighted to see that one of the tributaries that feeds the Schuylkill River is deserving of a stream redesignation to Exceptional Value Status.

Mill Creek in Union Township is part of the Schuylkill Highlands and a treasure for those who visit favorite places like French Creek State Park. It is surrounded by many other special protection streams and it is critical that DEP upgrades this stream now. As a resident of the Watershed that wants strong protections for our cleanest streams, I join with Delaware Riverkeeper Network as a co-petitioner to the Mill Creek upgrade petition.

Our freshwater is a precious and finite resource and Pennsylvania is facing tremendous challenges to keep our clean streams clean. This upgrade should be a first step to bringing needed protections and policies to ensure that the obligations of the Clean Water Act and anti-degradation policies are met.

Please include this letter in the Mill Creek redesignation petition to the Pennsylvania Department of Environmental Protection as we work together to protect our cleanest streams.

Melissa Hall
1566 Chalk Avenue
Blue Bell, PA, 19422

From: alex.milone@hotmail.com
Sent: Sunday, February 13, 2011 8:19 PM
To: keepermaya@delawareriverkeeper.org
Cc: drn@delawareriverkeeper.org
Subject: Speak Up for Mill Creek

the Delaware Riverkeeper Maya K. van Rossum
300 Pond Street
2nd Floor
Bristol, PA 19007

Dear Maya,

As a resident of the Delaware River Watershed, I am delighted to see that one of the tributaries that feeds the Schuylkill River is deserving of a stream re-designation to Exceptional Value Status.

Mill Creek in Union Township is part of the Schuylkill Highlands and a treasure for those who visit favorite places like French Creek State Park. It is surrounded by many other special protection streams and it is critical that DEP upgrades this stream now. As a resident of the Watershed that wants strong protections for our cleanest streams, I join with Delaware Riverkeeper Network as a co-petitioner to the Mill Creek upgrade petition.

Our freshwater is a precious and finite resource and Pennsylvania is facing tremendous challenges to keep our clean streams clean. This upgrade should be a first step to bringing needed protections and policies to ensure that the obligations of the Clean Water Act and anti-degradation policies are met.

Please include this letter in the Mill Creek redesignation petition to the Pennsylvania Department of Environmental Protection as we work together to protect our cleanest streams.

Alexander Milone
600 Creekside Lane
Wallingford, PA, 19086