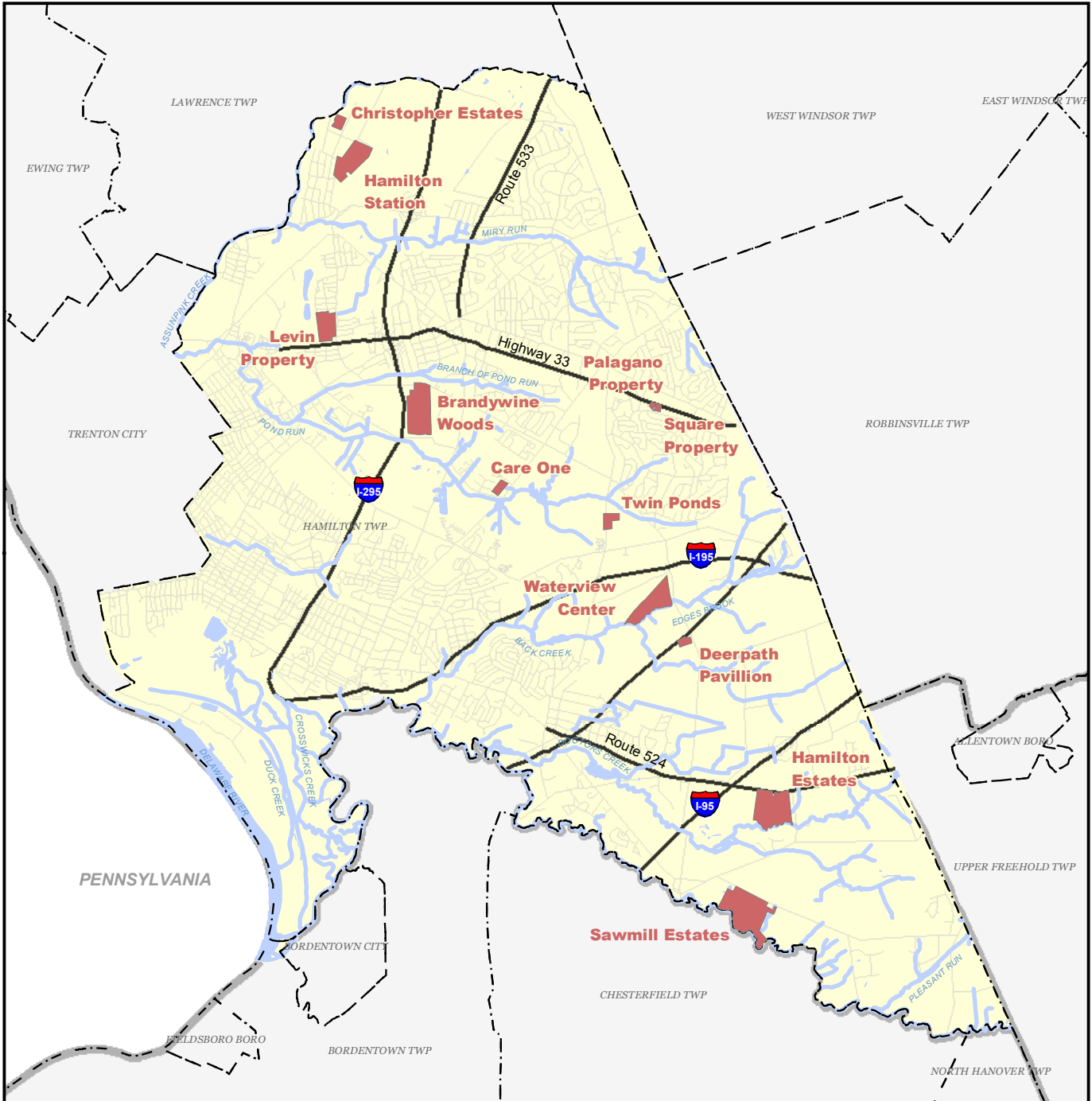


File: P:\1020\Projects\10200001\GIS\MapXDRN_Reviews_Portrait.mxd, March 01, 2010, Drawn by CLP, Copyright Princeton Hydro, LLC.



INDIVIDUAL PROJECT LOCATIONS
 HAMILTON TOWNSHIP
 STORMWATER REPORT
 DELAWARE RIVERKEEPER NETWORK
 MERCER COUNTY, NEW JERSEY

LEGEND

Roads	Streams
Highways	Project Location
Municipal Boundary	Lakes
County Boundary	Hamilton Township

PRINCETON HYDRO, LLC.
 1108 OLD YORK ROAD
 P.O. BOX 720
 RINGOES, NJ 08551

SOURCES:

- County and municipal boundaries, streams, and lakes obtained from NJDEP GIS website.
- Roads and highways obtained from NJDOT website.

Map Projection: State Plane New Jersey (feet) NAD83

0 3,750 7,500 Feet

