

LNG Export Terminal Safety Forum

**League of Women Voters PA
January 12, 2023**

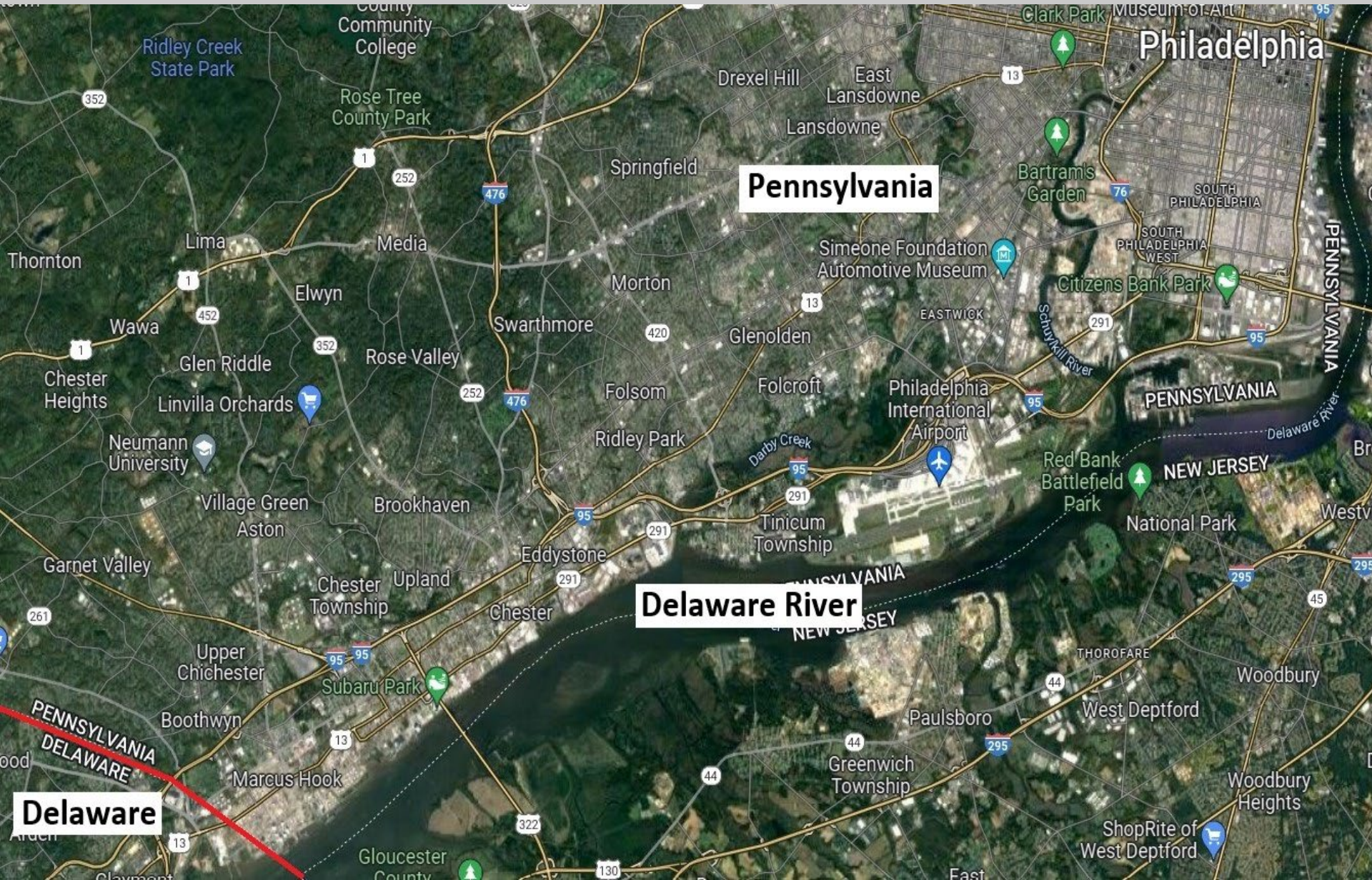
**Featured Speaker: Fred Millar
Hazmat and environmental safety expert**

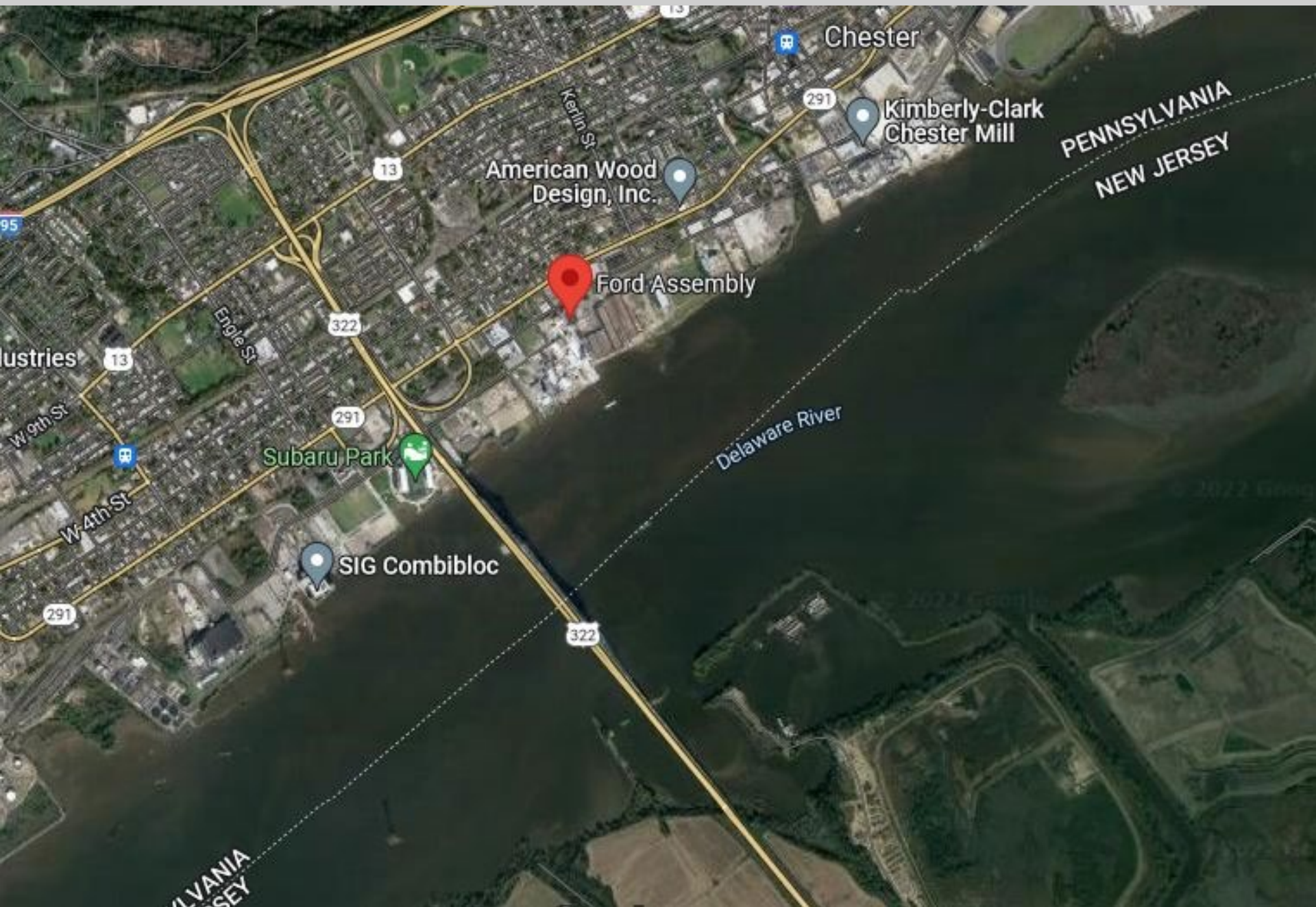
**Introductory remarks by Tracy Carluccio, Delaware
Riverkeeper Network and Mike Ewall, Energy Justice**

**Tracy Carluccio
Deputy Director
Delaware Riverkeeper
Network
Brief introductory
presentation and slides**



Delaware River from Philadelphia to PA/DE state line







Walmart

Chester Township

Harrah's Philadelphia Casino & Racetrack

Chester

Upper Chichester

McDonald's

Subaru Park

Produce Junction

Commodore Barry Bridge

Ogden Boothwyn

PA/DE State Line

Trainer

Covanta Delaware Valley LP

Tri State Liquors

Marcus Hook

Bridgeport

Marcus Hook Industrial Complex

Gloucester County DREAM Park

Claymont

Delaware River

Quala

High Hill Rd

Logan Township



City Border of Chester

Marcus Hook

Delaware

**PENNSYLVANIA
NEW JERSEY**

Delaware River

**PENNSYLVANIA
DELAWARE**

Marcus Hook Industrial Complex

Marcus Hook

Monroe Energy

Wawa

Linwood

Trainer

Power Home Remodeling

TNT Fireworks Supercenter...

FedEx

Lawn Croft Cemetery

10th St

452

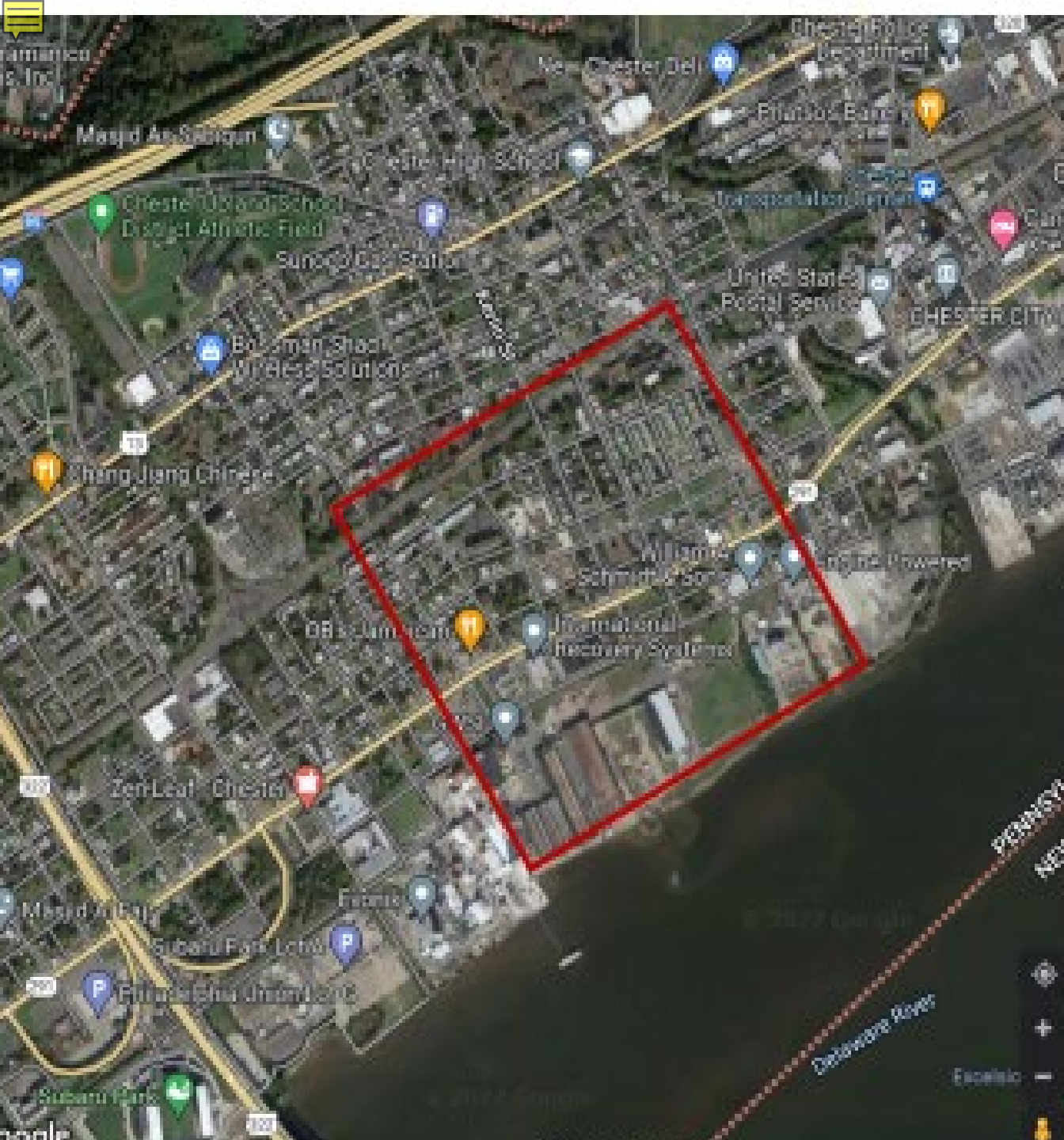
13

94

W 9th St

W 10th St

Delaware River



Action Contacts:

**Chester Residents
Concerned for
Quality Living
(CRCQL)**

[https://www.chesterr
esidents.org/](https://www.chesterr
esidents.org/)

**League of Women
Voters of PA**

[https://www.palww.or
g/](https://www.palww.or
g/)

Energy Justice

[https://www.energyj
ustice.net/tags/penn
sylvania](https://www.energyj
ustice.net/tags/penn
sylvania)

**Delaware
Riverkeeper
Network**

[https://www.delawar
eriverkeeper.org/](https://www.delawar
eriverkeeper.org/)